

TRUCK/SUV

PROCHARGER[®]
SUPERCHARGER SYSTEMS



**PROCHARGER INTERCOOLED SUPERCHARGER SYSTEMS FOR:
CHEVY/GMC, FORD, DODGE/RAM,
JEEP AND TOYOTA**

***“ProCharger is the World Headquarters
of Supercharging.”***

– Bret Kepner

INVENTED, ENGINEERED



AND MADE IN THE USA



TRUCK / SUV / OFF-ROAD

TABLE OF CONTENTS

ProCharger Advantages.....	1-4
2019-2026 GM Truck (6.2L, 5.3L)	6
2021-2026 GM SUV (6.2L, 5.3L)	7
2020-2026 GM Truck 2500/3500 (6.6L)	8
2015-2019 GM Truck 2500/3500 (6.0L)	9
2014-2020 GM Truck 1500 (6.2L, 5.3L)	10
2007-2014 GM Truck/SUV (6.2L, 6.0L, 5.3L, 4.8L)	11
2003-2007 GM Truck/SUV (6.0L, 5.3L, 4.8L)	12
1999-2003 GM Truck/SUV (6.0L, 5.3L, 4.8L)	13
1988-2000 GM Truck/SUV (7.4L, 5.7L)	14
2003-2009 Hummer H2 (6.2L, 6.0L)	14
2024-2026 Ford F-150 (5.0L)	16
2021-2023 Ford F-150 (5.0L)	17
2020-2022 Ford F-250/350 (7.3L)	18
2018-2020 Ford F-150 (5.0L)	19
2015-2017 Ford F-150 (5.0L)	20
2011-2014 Ford F-150 (5.0L)	21
2010-2014 Ford F-150 & SVT Raptor (6.2L, 5.4L)	22
2004-2010 Ford F-150 (5.4L)	23
1997-2003 Ford F-150 & Expedition (5.4L, 4.6L)	24
2019-2024 HEMI RAM (5.7L, 5.7L eTorque)	25
2009-2024 HEMI RAM Classic (5.7L)	26
2014-2024 HEMI RAM 2500/3500 (6.4L)	27
2004-2008 HEMI RAM (5.7L)	28
1996-2001 Ram/Dakota/Durango (5.9L, 5.2L)	29
2018-2025 Durango SRT (5.7, 6.4L)	30
2020-2025 Jeep Gladiator JT (3.6L)	31
2018-2025 Jeep Wrangler JL (3.6L)	32
2012-2018 Jeep Wrangler JK (3.6L)	33
2012-2021 Jeep Grand Cherokee SRT (6.4L)	34
2011-2021 Jeep Grand Cherokee (5.7L)	35
2006-2010 Jeep Grand Cherokee SRT8 (6.1L)	36
2016-2023 Toyota Tacoma (3.5L)	37
2005-2015 Toyota Tacoma (4.0L)	38
2010-2024 Toyota 4Runner (4.0L)	39
Off-Road and Competition	40-42
Technology and Thermal Advantage	43-54
Show, Go & Tow; Media Highlights	55-56
Proven History: Timeline of Power	57-58
ProCharge Your Life	59-60



THE WORLD'S MOST POWERFUL SUPERCHARGERS

Largest Power Gains

An Intercooled ProCharger System can add up to 85% more power to your truck or SUV with no additional engine modifications, special fuels, or need for extended cool-down times. ProCharger produces the world's most powerful superchargers and delivers the most power per psi of boost, thanks to best-in-class aero stage designs and highly effective intercooling. With customers frequently reporting 200K+ miles, ProCharger technology gives you the power and torque you want without sacrificing engine longevity.

Optimal Power Curve

This additional power is delivered in line with your truck or SUV's ability to put that power to the pavement, with unmatched drivability for daily driving, towing and off-road applications. ProCharger designs allow the engine to develop power at crank angles further past top dead center, thereby avoiding the undue engine strain generated by other power adders, and giving you a smoother, more usable power curve. For those with 8- and 10-speed transmissions, ProCharger technology is an even better match with the operating range of modern engines.

Fast, Easy Installation

ProCharger kits are designed for a straightforward, bolt-on installation that can be completed in a day or weekend with common hand tools. Installation times average 6-9 hours for trucks and SUV's, less than half the time of many others, with no engine disassembly or modifications required.

Fuel Mileage Friendly

Beyond industry-leading power and durability, centrifugal forced induction is also a fuel-efficient form of high performance, with owners frequently reporting improved fuel economy under normal operating conditions or as a positive offset for vehicle accessories known to reduce fuel economy.

Made in America

At ProCharger, we are incredibly proud of our legacy and our commitment to making top-notch products right here in the USA. Every ProCharger supercharger is designed, built, and tested at our headquarters campus in Kansas City, ensuring that you get superior quality, performance, and the best availability. Once you've experienced the incredible, real-world performance of this technology, you'll agree that ProCharger is the Ultimate Power Adder™.



"...Over the past 30 years, improvements to supercharger kits in general can in large part be attributed to ProCharger, resetting the performance...bar higher for everyone. This isn't hype, but a matter of historical record." – *MOTORTREND*



Leadership, Innovation and Reliability

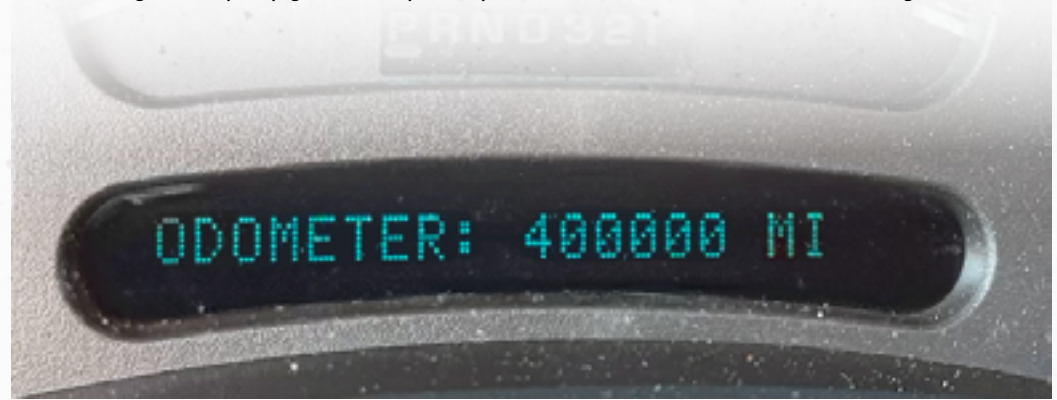
- ProCharger has the broadest range of supercharger models to reliably support virtually any power level you need, from 400 to 4,500+ HP. Our performance is proven in competition, with ProCharger customers winning the most championships and owning the most records.
- The first to introduce integrated intercooled supercharging (over 5 years before others), ProCharger also led with billet impellers, 50 state emissions legal systems above 8 psi, billet gearcases and self-contained oiling for centrifugals, as well as many other firsts - and that innovation continues today.

Support, Peace of Mind, Quick Shipping

- ProCharger has the industry's largest and most knowledgeable support team, delivering outstanding technical and customer service, as well as the largest dealer network.
- ProCharger typically also has the best product availability - shipping quickly thanks to American manufacturing, company scale and capabilities, and American sourcing.

Real World Power Gains

- We don't do fuzzy math. If we say you'll gain up to 85% more power, we're talking real dyno-verified gains on pump gas. That's power you can feel. To learn more, visit ProCharger.com.



"This P1SC Pro-Charger has 417,926 miles on it and has never had one single problem. This says a lot about the product ProCharger makes." - Dan D.

**MADE
IN THE USA** 

SUPERIOR RELIABILITY & DURABILITY

Durability Starts with Quality

The result of hard work and a commitment to quality, ProCharger superchargers are designed and assembled at our headquarters in Kansas City to provide superior quality control and availability. Our engineering staff uses state-of-the-art design programs to bring their concepts to reality. Our machinists faithfully reproduce these designs using our vast array of modern CNC machinery. Upon completion, precision machined supercharger parts are inspected for quality and distributed to our supercharger assembly department where skilled technicians hand build and test run each unit prior to shipment.

Warrantied Performance

Proudly standing behind our products, we offer a range of warranty options, including 12 or 36 month coverage on new serpentine systems, and a 3-year/36,000-mile powertrain warranty for select new vehicle models.



Sustainable Torque

Thanks to the highest efficiency, and no heat transfer from engine-top mounting or an exhaust interface, ProCharger technology delivers cool charge air temperatures and low exhaust gas temperatures. With this thermal advantage, ProCharger is not only able to produce a large increase in torque, but also sustain that increase longer than other power adders.

Designed For Reliability

Aerospace Grade Billet Aluminum: Billet plays an important role in reliability. Because a billet wheel is made from a superior material (vs. cast), it is lighter and stronger and free of flaws. Crafted from aircraft-grade billet aluminum alloy, ProCharger impellers and gear cases are the most reliable in the industry.

Higher Step-up Ratios: Our superchargers utilize higher internal step up ratios, which allow the use of larger pulleys that provide more belt contact and increased drive belt longevity. This design allows a serpentine belt to make power in excess of 1,450 HP, a level once only available to cog belt users.

Optimal Oiling System: ProCharger's innovative, self-contained design allow the supercharger to operate independently from the engine's oil supply, avoiding motor oil contaminants. Also, oil temperatures run cooler than superchargers fed by engine oil. Our proprietary synthetic lubricant allows for higher bearing speeds, decreased bearing temperatures, and increased bearing life.

Shared Innovation: ProCharger street superchargers are built on a foundation of shared innovation, precision manufacturing, and military-grade quality control. This is drawn from both our record-setting race superchargers and the proven durability of our industrial division, Inovair, blowers (image to the left) used in highly demanding 24/7/365 duty cycles. With decades of real-world experience in high-stress motorsports, military, and around-the-clock municipal applications, we've engineered our street systems to deliver unmatched reliability—built to perform under pressure, mile after mile. For more information, see page 47.

“...they also get easy driveability and great gas mileage, because if it’s tuned right, a supercharger will give you 20 to 25 percent better fuel economy.” – *Performance Racing Industry Magazine*

System Options and Choices

ProCharger offers you the most options to customize your supercharger system as desired. This includes noise levels (standard or a more stealthy helical option), finish options (black, polished or satin) and a supercharger upgrade path that is superior to other brands.



Visit ProCharger.com for the latest video, blog updates and additional information





2019-2026
1500 6.2L, 5.3L



2019-2026 GM Trucks

Bolt on 45-50% more power to your Chevy or GMC 1500. The additional horsepower and torque is perfect for towing, passing, and play. This easy-to-install ProCharger supercharger system produces a massive torque curve through the entire power band, matching the shift points of these transmissions perfectly. Designed to have the most effective cooling, self-contained lubrication, and high-strength, billet aluminum parts, customers commonly report 200k+ miles on ProCharged trucks. If you are looking for extra power for your daily driver, workhorse, or track toy, adding a ProCharger ensures years and years of supercharged performance out of your engine.

HO Intercooled System

- 6.2L: 190+ horsepower gain
- 5.3L: 160+ horsepower gain
- 8 psi of boost
- P-1SC-1 supercharger, satin finish
- Vertically-mounted air-to-air intercooler
- 8-rib dedicated belt drive
- Bullet blow-off valve
- PCM tuning supplied
- Typical install time 6-8 hours
- Retains factory intake manifold

Stage II Intercooled System

Same as HO system except:

- Race intercooler upgrade (1,000 HP capable)
- Easily upgradable for higher power levels
- Stage II Air Inlet

HO / Stage II Intercooled Tuner Kits

- Omits tuning, otherwise identical to systems

Optional Upgrades Include:

- Black or polished finish for supercharger and/or bracket
- Helical gear set for noise reduction
- Supercharger upgrades: P-1X (All), D-1SC through F-1A-94 (Tuner Kit)
- Intercooler upgrade (Stage II)
- Air Inlet upgrade (HO Only)



2019-2025 GM Truck Systems & Tuner Kits Available for:

- Chevrolet Silverado
- GMC Sierra

"Instant power capable of roasting the hides at any minute!"
– Truck Trend



2021-2026 • SUV

6.2L, 5.3L



2021-2026 GM SUV's

Looking to power up your Chevy or GMC SUV? A ProCharger supercharger delivers 45-50% more instant, usable power that transforms your driving experience—whether you're towing a trailer, road-tripping with the family, or just enjoying it as a daily driver. With efficient cooling, durable billet construction, and a self-contained oiling system, these systems are engineered for long-term performance you can count on. Many owners report 200,000+ trouble-free miles. It's the upgrade that adds serious muscle without sacrificing drivability.

HO Intercooled System

- 6.2L: 190+ horsepower gain
- 5.3L: 160+ horsepower gain
- 8 psi of boost
- P-1SC-1 supercharger, satin finish
- Vertically-mounted air-to-air intercooler
- 8-rib dedicated belt drive
- Bullet blow-off valve
- PCM tuning supplied
- Typical install time 6-8 hours
- Retains factory intake manifold

Stage II Intercooled System

Same as HO system except:

- Race intercooler upgrade (1,000 HP capable)
- Easily upgradable for higher power levels
- Stage II Air Inlet

HO / Stage II Intercooled Tuner Kits

- Omits tuning, otherwise identical to systems

Optional Upgrades Include:

- Black or polished finish for supercharger and/or bracket
- Helical gear set for noise reduction
- Supercharger upgrades: P-1X (All), D-1SC through F-1A-94 (Tuner Kit)
- Supercharger upgrades Intercooler upgrade (Stage II)
- Air Inlet upgrade (HO Only)



2021-2025 GM SUV's Systems & Tuner Kits Available for:

- Chevrolet Tahoe
- GMC Yukon
- Cadillac Escalade
- Chevrolet Suburban

"Provides boost and power on demand, which is great for on-road and off-road performance... and consistent, reliable power, even in extreme conditions" – Off-Road Xtreme



2020-2026
2500/3500 HD 6.6L



2020-2026 Chevy and GMC 2500/3500 HD

Take your 2500/3500 HD to the next level! Delivering a remarkable 50–55% power gain (7 psi) on otherwise stock engines, the ProCharger system is the ultimate upgrade for heavy-duty towing, hauling, and work use. Whether you're pulling a trailer or loading up the bed, the added power makes every job easier. Each kit comes complete with preformed tubing and user-friendly, step-by-step instructions. Our massive 3-core vertical air-to-air intercooler keeps intake air cool without sacrificing performance, while a dedicated belt drive powers the self-contained P-1SC-1 supercharger for reliable, long-lasting boost.

HO Intercooled System

- 600+ crank HP
- 7 psi boost
- Dedicated 6-rib belt drive
- 3-core vertical air-to-air intercooler
- PCM Tuning supplied
- Retains factory intake manifold

HO Intercooled Tuner Kit

- Omits tuning
- Otherwise identical to HO Intercooled System

Stage II Intercooled System

Same as HO system, except:

- Dedicated 8-rib belt drive
- 1500 HP air-to-air race intercooler

Optional Upgrades Include:

- Polished or black finish for supercharger and/or bracket
- Helical gear set for noise reduction
- Supercharger upgrades: P-1X (All), D-1SC through F-1X (Tuner Kit)



"The truck had a completely new driving personality, and the slight but distinctive supercharger whine sounds awesome"

– MotorTrend



2015-2019 2500 HD 6.0L



2015-2019 Chevy and GMC 2500

Delivering 7-8 psi of boost representing a 45% horsepower gain on otherwise stock engines, ProCharger's 2015-2019 GM 6.0 Truck systems produce a substantial difference in everyday drivability and towing. The HO Intercooled System includes preformed tubing, step-by-step instructions, as well as a one-year standard warranty that the owner can extend to a full 3-years for a stock vehicle. The system also features a shared-drive design for the self-contained P-1SC-1 supercharger and comes with a 3-core vertical intercooler. Additionally, a helical gearset option for lower supercharger noise levels is available. Lastly, ProCharger's patented and proven self-contained supercharger oiling design eliminates the need for external oil lines or the need to tap into the engine's oil supply. This simplifies the installation while also providing superior lubrication and lower supercharger oil temperatures.

HO Intercooled System

- 45%+ HP gain
- 7-8 PSI of boost
- 3-core vertical air-to-air intercooler
- Utilizes factory 6-rib drive belt
- PCM Tuning supplied
- ProFlow blow-off valve
- Forward-facing air inlet
- Retains factory intake manifold

HO Intercooled Tuner Kit

- Omits tuning and fuel system components
- Otherwise identical to HO Intercooled System

Optional Upgrades Include:

- Polished or black finish for supercharger and/or bracket
- Helical gear set for noise reduction
- Supercharger upgrades: D-1SC (Tuner Kit)
- Vertical mount intercooler
- Forward-facing air inlet



***"Towing, better mileage, great power... and fun-to-drive performance.
The ProCharger system easily satisfied our criteria"*** – Truckin'



2014-2018 • 1500
2015-2020 • SUV
6.2L, 5.3L



2014-18 / 2015-2020 GM Truck/SUV's

When it comes to the GM Trucks and SUVs, ProCharger is the power adder that does it all. Whether you are looking for a turn-key system to create a 600+ HP daily driver, or building a 1,200+ HP weekend track toy, ProCharger has the perfect system or kit for you. From billet gear cases on the self-contained head units, to the aircraft-grade, CNC-machined aluminum brackets, to the rugged, highly-effective air-to-air intercooler system, these systems were designed to look great and perform for decades. Designed to be easily installed in an afternoon in the garage with common hand tools, these ProCharger systems produce a reliable 45%+ horsepower gain with just 8 psi and factory fuel injectors, on otherwise stock engines running premium pump gas.

HO Intercooled System

- 45%+ HP gain
- 8 psi of boost
- P-1SC-1 supercharger, satin finish
- ProFlow blow-off valve
- 3-core air-to-air intercooler
- Utilizes factory 6-rib belt drive
- Tuning provided

Stage II Intercooled System

Same as HO system, except:

- 8-rib dedicated belt drive

HO / Stage II Intercooled Tuner Kits

- Omits tuning, otherwise identical to system

2014-20 GM Truck/SUV Systems & Tuner Kits Available for:

- Chevrolet Silverado
- Chevrolet Tahoe
- GMC Yukon
- GMC Sierra
- Cadillac Escalade
- Chevrolet Suburban



HO Intercooled System



Stage II system



Optional Upgrades:

- Polished, or black supercharger and/or bracket
- Helical gear set for noise reduction
- Supercharger upgrades: P-1X (All), D-1SC through F-1X (Tuner Kit)
- Rear or front-facing air inlet (for HO only)
- 10-rib drive upgrade (Stage II)
- Race intercooler (Tuner Kit Only)

GM

2007-2013 • 1500

2007-2014 • SUV

6.2L, 6.0L, 5.3L, 4.8L

2007-2014 GM Truck/SUV

HO Intercooled ProCharger Systems for GM trucks and SUV's produce a 50-55% power gain on stock engines running premium pump gas with 8-9 psi (5.3L / 4.8L) or 7-8 psi (6.2L/6.0L) of intercooled boost on a shared 6-rib drive system. Stage II systems are also available, which include a 8-rib dedicated drive system and are otherwise identical to the HO intercooled systems. HO and Stage II Intercooled Tuner Kits and higher boost levels are available for modified engines. Industry-exclusive features of the 2007-14 GM truck/SUV kits include the proven and patented, self-contained ProCharger P-1SC-1 supercharger, and highly effective air-to-air intercooler.

HO Intercooled System

- 50-55% HP (4.8L/5.3L), 50%+ HP (6.0L/6.2L)
- 8-9 psi (4.8L/5.3L), 7-8 psi (6.0L/6.2L)
- P-1SC-1 supercharger, satin finish
- 3-core air-to-air intercooler (6.0L/6.2L)
- 2-core air-to-air intercooler (4.8L/5.3L)
- Utilizes factory 6-rib belt drive
- ECU/TCU tuning provided
- ProFlow blow-off valve

Stage II Intercooled System

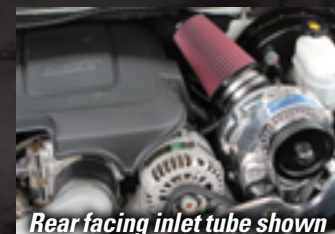
Same as HO System, except:

- 8-rib dedicated belt drive

HO / Stage II Intercooled Tuner Kits

- Omits tuning and fuel system components
- Otherwise identical to HO / Stage II Intercooled System

"A huge dose of extra pulling capability throughout the power curve with great drivability... The installed ProCharger system is designed with a factory look and appearance which we really like." – Truckin'



Optional Upgrades Include:

- Polished or black finish for supercharger and/or bracket
- Helical gear set for noise reduction
- Supercharger upgrades: P-1X (All), D-1SC through F-1X (Tuner Kit)
- Race blow-off valve
- 3-core intercooler (4.8L/5.3L only)
- Vertical intercooler (replacing horizontal)
- Forward-facing air inlet (Stage II)
- Vertical 3-core intercooler (Stage II)

2003-2007
6.0L, 5.3L, 4.8L

GM

2003-2007 GM Truck/SUV

ProCharger Intercooled Systems for the 2003-07 GM Truck & SUV offer industry-leading 55-65% power gains on stock engines running premium pump gas at 8-9 psi (5.3L / 4.8L) or 7-8 psi (6.0L) of intercooled boost. For modified engines, higher boost levels are available with the HO Intercooled and Stage II Intercooled Tuner Kits. ProCharger's American-made 2003-07 GM truck and SUV kits feature the patented and proven P-1SC self-contained supercharger and highly effective air-to-air intercooler system.

HO Intercooled System

- 60-65%+ HP (4.8L, 5.3L), 55-60%+ HP (6.0L)
- 8-9 psi (4.8L, 5.3L), 7-8 psi (6.0L)
- P-1SC supercharger, satin finish
- 2-core horizontal air-to-air intercooler
- Utilizes factory 6-rib belt drive
- ECU/TCU tuning provided
- Fuel components included
- ProFlow blow-off valve

Stage II Intercooled System

Same as HO System, except:

- 8-rib dedicated belt drive
- 3-core vertical intercooler
- P-1SC-1 supercharger, satin finish

HO / Stage II Intercooled Tuner Kits

- Omits tuning and fuel system components
- Otherwise identical to HO / Stage II Intercooled System

"An intercooled ProCharger Tuner Kit like the one we chose supports the highest boost and power levels in the industry."

— StreetTrucks.com



Optional Upgrades Include:

- Polished, or black supercharger and/or bracket
- Helical gear set for noise reduction
- Intercooler upgrade
- Supercharger upgrades: P-1X (Stage II), D-1SC through F-1X (Tuner Kit)
- 10-rib drive upgrade (Tuner Kit)



1999-2003

6.0L, 5.3L, 4.8L



1999-2003 GM Truck/SUV

For the best system efficiency and performance, look no further than ProCharger's HO Intercooled Systems and Kits for 1999-2003 GM Truck & SUV's that offer industry leading 55-65% power gains on stock engines running premium pump gas at 8-9 psi (5.3L/4.8L) or 7-8 psi (6.0L) of intercooled boost. For modified engines, higher boost levels are available with the HO Intercooled and Stage II Intercooled Tuner Kits. These offerings feature the patented and proven P-1SC supercharger, and highly effective air-to-air intercooler system.

HO Intercooled System

- 60-65%+ HP (4.8L, 5.3L), 55-60%+ HP (6.0L)
- 8-9 psi (4.8L, 5.3L), 7-8 psi (6.0L)
- P-1SC supercharger, satin finish
- 2-core horizontal air-to-air intercooler
- ProFlow blow-off valve
- Utilizes factory 6-rib belt drive
- ECU/TCU tuning provided
- Fuel components included

Stage II Intercooled System

Same as HO System, except:

- 8-rib dedicated belt drive
- 3-core vertical intercooler
- P-1SC-1 supercharger, satin finish

HO / Stage II Intercooled Tuner Kits

- Omits tuning and fuel system components
- Otherwise identical to HO / Stage II Intercooled System

"We love it when a supercharger system like the ones from ProCharger under promise and over deliver" – Super Chevy



Optional Upgrades Include:

- Polished or black supercharger and/or bracket
- Helical gear set for noise reduction
- Intercooler upgrade
- Supercharger upgrades: P-1X (Stage II), D-1SC through F-1X (Tuner Kit)
- 10-rib drive upgrade (Tuner Kit)

1988-2000

7.4L , 5.7L (VORTEC & TBI)



1988-2000 GM Truck/SUV

ProCharger HO Intercooled Systems for 1988-2000 GM trucks & SUVs produce power gains of 60-65% on stock engines running 8-9 psi of boost. Equipped with the ultra-efficient ProCharger air-to-air intercooler, these American-made systems will deliver the power to tow, and power to go. ProCharger's industry-leading supercharger and intercooler technology delivers cooler air, more sustainable torque, and substantially more total power than any other supercharger.

HO Intercooled System

- 60-65%+ HP gain
- 8-9 psi of boost
- P-1SC/P600B supercharger, satin finish
- 2-core horizontal air-to-air intercooler
- Utilizes factory 6-rib belt drive
- MAF massager provided
- Fuel components included
- ProFlow blow-off valve

HO Intercooled Tuner Kit

- Omits fuel system (FMU and pump)
- Otherwise identical to HO Intercooled System

Optional Upgrades Include:

- Polished or black supercharger and/or bracket
- Helical gear set for noise reduction (P-1SC or D-1SC)
- Supercharger upgrades: D-1SC (replacing P-1SC), D-1 (replacing P600B)
- Polished intake track with bonnet
- Omit FMU
- Omit in-line fuel pump

2003-2009 • Hummer H2

6.2L, 6.0L



2003-2009 Hummer H2

ProCharger's High Output (HO) Tuner Kits for the Hummer H2 deliver big performance gains, with 50%+ power increases typical. Featuring self-contained superchargers, a highly efficient air-to-air intercooler, and OEM-quality components, this system ensures a clean, factory-style fit. Designed for easy installation with no external oil lines, the increased torque from the ProCharger enhances towing capability, while the smooth, predictable power improves both on-road drivability and off-road capability. Built to last, ProCharger systems have been proven on vehicles with 200,000+ miles, delivering consistent performance over the long haul.

HO Intercooled Tuner Kits

6.2L Engine

- 50% horsepower gain is typical
- P-1SC-1 supercharger, satin finish
- Vertically-mounted H2 air-to-air intercooler
- Utilizes factory 6-rib belt drive
- ProFlow blow-off valve

6.0L Engine

Same as 6.2L, except:

- P-1SC supercharger, satin finish
- Horizontally-mounted H2 air-to-air intercooler

Optional Upgrades Include:

- Polished or black finish for the supercharger and/or bracket
- Helical gear set for noise reduction
- Supercharger upgrades: P-1SC-1 and D-1SC
- Crank Pin Kit





2024-2026 F-150 5.0L



2024-2026 F-150 Truck

Turn your F-150 into a horsepower and torque monster with ProCharger's bolt-on supercharger system, delivering massive 65-80%+ power gains! This extra power perfectly complements the transmission's shift points with an optimized power band. Kits include everything needed for a quick installation without requiring permanent modifications. A highly effective high flowing air-to-air intercooler ensures cool air temps with no moving parts to fail. Engineered for durability, ProCharger systems withstand extreme conditions while delivering reliable performance mile after mile.

High Output Intercooled System

- 65-70% HP gain
- 10 psi boost
- P-1X supercharger, satin finish
- Uses factory 6-rib shared drive
- 1300 HP air-to-air intercooler
- ProFlow blow-off valve
- Typical Install Time: 6-8 hrs
- 3yr / 36k Powertrain Warranty Available

High Output "PRO" Intercooled System

Same as HO system except

- 75-80%+ HP gain
- 12 psi boost
- Includes fuel system upgrades

Stage II Intercooled System

Same as High Output PRO system except

- 8-rib dedicated belt drive
- 1600+ HP air-to-air race intercooler
- Typical install time: 8-9 hrs

High Output / Stage II Intercooled Tuner Kits

- Omits tuning and fuel system components
- Otherwise identical to High Output/Stage II



Optional Upgrades Include:

- Black or polished finish for supercharger and/or bracket
- Black finish for intercooler
- Helical gear set for noise reduction
- Supercharger upgrades: D-1SC through F-1A-94 (Tuner Kits)
- Race blow-off valve
- Air-to-air race intercooler upgrade
- 10-rib dedicated belt drive (Stage II)
- Crank Support for ultra high HP (Stage II)
- Polished or black finish for the crank support (Stage II)



2021-2023 F-150 5.0L

2021-2023 F-150 Truck

Unleash a jaw-dropping 75–80%+ more horsepower and torque from your 2021–23 F-150 with a ProCharger supercharger system! This bolt-on upgrade delivers seamless power that is optimized to work with factory shift points for an exceptional driving experience. Each system comes complete with everything needed for a quick and easy installation, with no cutting or permanent modifications required. A robust, high-flowing air-to-air intercooler keeps charge temps low without relying on moving parts. Built tough for the long haul, every ProCharger system is engineered for extreme durability and dependable performance on and off the road.

HO Intercooled System

- 75-80% HP gain
- 12 psi boost
- P-1X or P-1SC-1 supercharger, satin finish
- Uses factory 6-rib shared drive
- Uses factory airbox
- 1300 HP air-to-air intercooler
- ProFlow blow-off valve
- Typical Install Time: 6-8 hrs

Stage II Intercooled System

Same as HO system except

- 8-rib dedicated belt drive
- 1600+ HP air-to-air race intercooler
- Fuel system upgrade components
- Typical install time: 8-9 hrs

HO / Stage II Intercooled Tuner Kits

- Omits tuning and fuel system components
- Otherwise identical to HO/Stage II

“The ten-speed automatic transmission compliments the blower, maintaining boost throughout the powerband”
– ***Truck Trend***



Optional Upgrades Include:

- Black or polished finish for supercharger and/or bracket
- Black finish for intercooler
- Helical gear set for noise reduction
- Air-to-air race intercooler upgrade
- Supercharger upgrades: P-1X (All), D-1SC through F-1A-94 (Tuner Kits)
- 10-rib dedicated belt drive (Stage II)
- Race blow-off valve
- Crank Support for ultra high HP (Stage II)
- Polished or black finish for the crank support (Stage II)

2020-2022 F-250/F-350 7.3L



2020-2022 F-250/350 Truck

Get 45+% more power with ProCharger's bolt on High Output (HO) system for Ford F-250 and F-350 Super Duty trucks. With the truck's 10-speed automatic transmission, ProCharger delivers peak boost and optimized efficiency consistently throughout the entire drive cycle. That is power you can FEEL both on the street and while pulling a heavy load. Built for extreme durability, ProCharger systems have been proven reliable on vehicles with over 200,000 miles, ensuring long-lasting performance in even the toughest conditions. Compatible with dual alternator and dual battery configurations, this system is designed to integrate seamlessly with your truck while delivering maximum power and reliability.

HO Intercooled System

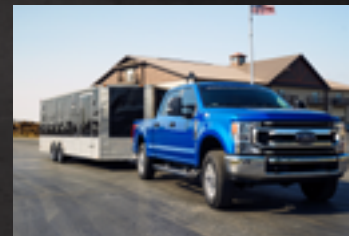
- 45%+ HP gain
- 7-8 psi boost
- P-1SC-1 supercharger, satin finish
- 3 core air-to-air intercooler
- Utilizes factory 6-rib belt drive
- Uses factory airbox
- Bullet blow-off valve
- Includes fuel system upgrade components
- PCM tuning provided

HO Intercooled Tuner Kit

- Omits injectors and tuning
- Otherwise identical to HO Systems

"Fun to drive, with the acceleration of a sports car, and greatly improved torque that can help bring towing capability on par with 6.7L diesel-powered trucks, for a lot less money." – **MotorTrend**

Call for 2023+ F-250/F-350



Optional Upgrades Include:

- Black or polished finish for supercharger and/or bracket
- Helical gear set for noise reduction
- Supercharger upgrades: P-1X (All), D-1SC through F-1A-94 (Tuner Kit)
- Race air-to-air intercooler upgrade



2018-2020 F-150 5.0L

2018-2020 F-150 Truck

Owners of 2018-20 F-150 5.0L 4V trucks can choose between the stout HO Intercooled System or the impressive Stage II Intercooled system, both delivering a massive 75-80% HP power gain. Built to last for hundreds of thousands of miles, both systems come standard with tuning and large intercoolers for cooler air and higher performance. ProCharger's patented, self-contained oiling design requires no external oil lines. These supercharger systems work perfectly on premium pump gas and with the F-150s 10 speed transmission; not only does the ProCharger add tire-destroying torque off the line, the added horsepower is perfectly matched in the engine's power band with the optimum gearing in the transmission.

HO Intercooled System

- 75-80% HP gain
- 11-12 psi boost
- P-1SC-1 supercharger, satin finish
- 1300 HP 3-core air-to-air intercooler
- 8-rib dedicated belt drive
- ProFlow blow-off valve
- PCM tuning provided

Stage II Intercooled System

Same as HO system except:

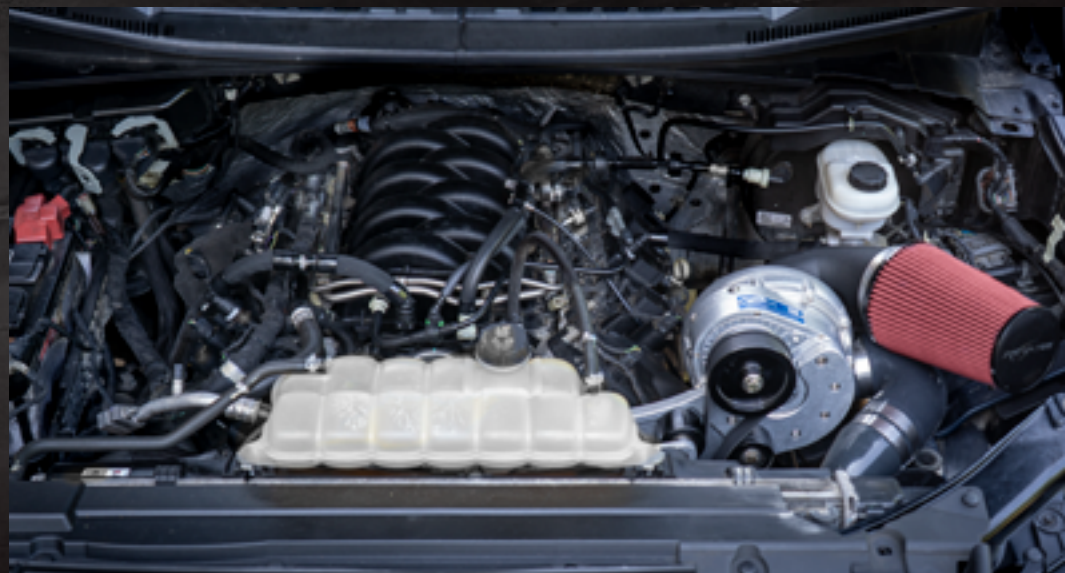
- 75-80% HP gain
- 11-12 psi boost
- Air-to-air Race intercooler

HO / Stage II Intercooled Tuner Kits

- Omits tuning

Optional Upgrades Include:

- Polished or black finish for supercharger and/or bracket
- Helical gear set for noise reduction
- Supercharger upgrades: P-1X (All), D-1SC through F-1A-94 (Tuner Kits)
- Crank support for higher HP applications
- Black or polished finish for crank support
- Air-to-air Race intercooler upgrade



F150 (2015-20) / Raptor (2017-20) EcoBoost Intercooler

F150 and Raptor EcoBoost owners can upgrade to one of the biggest and most effective intercooler options available. The ProCharger Raptor intercooler upgrade provides much lower air inlet temps and a lower pressure drop for improved performance, even in extreme conditions. All hardware and piping is included. Tuning is not included.





2015-2017 F-150 5.0L



2015-2017 F-150 Truck

Bolt on up to 90% more power and enjoy it every day! The ProCharger system for 2015–17 Ford F-150 trucks with the 5.0L 4V engine features a durable, easy-to-install design that delivers significant and reliable power gains on otherwise stock engines using premium pump gas. Known for exceptional longevity, many ProCharger customers report over 200,000 miles of hassle-free, boosted driving. Whether you're towing, off-roading, or just having fun with a powerful daily driver, this system delivers consistent performance. 50-state street legal versions of this kit are also available, with power gains and boost levels that may vary slightly from the configurations shown here.

HO Intercooled System

- 60-70%+ HP gain
- 8-9 psi boost
- P-1X supercharger, satin finish
- 3-core air-to-air intercooler
- 8-rib dedicated belt drive
- ProFlow blow-off valve
- Fuel components supplied
- PCM tuning provided

Stage II Intercooled System

Same as HO system except:

- 85-90%+ HP gain
- 11-12 psi boost
- Air-to-air Race intercooler

HO / Stage II Intercooled Tuner Kits

- Omits tuning and fuel system components
- Otherwise identical to HO/Stage II Systems

"We were looking forward to a few more MPGs and a whole lot of power, but the peak horsepower of 536 pretty much blew our minds. That's nearly 200hp over stock!"

– Truck Trend



Optional Upgrades Include:

- Polished or black finish for supercharger and/or bracket
- Helical gear set for noise reduction
- Supercharger upgrades: P-1X (All), D-1SC through F-1A-94 (Tuner Kits)
- Crank support for higher HP applications
- Black or polished finish for crank support



2011-2014 F-150 5.0L

5.0L

2011-2014 F-150

The HO Intercooled System for 2011-14 Ford F-150 trucks with 5.0L 4V engines features an easily installed design with self-contained P-1SC-1 supercharger and 3-core intercooler. The systems produce a reliable 45-55% power gain with just 6-7 psi and factory fuel injectors, on otherwise stock engines running premium pump gas. With the 5.0L Stage II Intercooled System, 60-70% power gains are possible. It features 8-9 psi, larger fuel injectors, and air-to-air Race Intercooler.

HO Intercooled System

- 45-55% HP gain
- 6-7 psi boost
- P-1SC-1 supercharger, satin finish
- 3-core air-to-air intercooler
- 8-rib dedicated belt drive
- ProFlow blow-off valve
- Rear-facing air inlet
- PCM tuning provided

Stage II Intercooled System

Same as HO system except:

- 60-70% HP gain
- 8-9 psi of boost
- Includes upgraded fuel components
- Air-to-air Race intercooler

HO / Stage II Intercooled Tuner Kits

- Omits tuning and fuel system components
- Otherwise identical to HO/Stage II Systems

"The ProCharger kits come complete with all the parts and hardware to do the job"
– Truckin'



Forward Facing Air Inlet, Black Finish



Stage 2 Intercooler



Standard Air Inlet, Satin Finish

Optional Upgrades Include:

- Polished or black finish for supercharger and/or bracket
- Helical gear set for noise reduction
- Supercharger upgrades: P-1X (All), D-1SC through F-1A-94 (Tuner Kits)
- Crank support for higher HP applications
- Black or polished finish for crank support
- Race air-to-air intercooler upgrade
- Forward-facing air inlet



2010-2014 SVT RAPTOR 6.2L, 5.4L 2011-2014 F-150 6.2L



2010-2014 SVT Raptor 6.2L and 5.4L, F-150 6.2L

ProCharger was first to market with a complete air-to-air intercooled supercharger system for work hard, play hard Ford F-150 trucks. The HO Intercooled System features the P-1SC-1 supercharger and a highly effective air-to-air intercooler. HO Systems are 100% complete with all mounting hardware, tubing and tuning included. ProCharger systems for F-150's produce 50-60% power gains from 8-9 psi of boost on otherwise stock engines running high quality pump gas. HO Intercooled Tuner Kits and higher boost levels are available for modified engines.

HO Intercooled Systems

5.4L:

- 60%+ HP gain
- 8-9 psi boost
- P-1SC-1 supercharger, satin finish
- 3-core air-to-air intercooler
- Utilizes factory 6-rib belt drive
- ProFlow blow-off valve
- PCM tuning provided
- Includes fuel components

6.2L:

Same as 5.4L, except

- 50%+ HP gain
- 7-8 psi boost
- D-1SC supercharger, satin finish



Stage II Intercooled System

Same as HO System, except:

- 8-rib dedicated belt drive
- ProCharger P-1SC-1 supercharger
- Air-to-air Race intercooler

HO / Stage II Intercooled Tuner Kits for 6.2L and 5.4L

- Omits tuning and fuel system components
- Otherwise identical to HO Intercooled System



Optional Upgrades Include:

- Polished or black finish for supercharger and/or bracket
- Helical gear set for noise reduction
- Supercharger upgrades: P-1X (Stage II), D-1SC through F-1A-94 (Tuner Kits)
- Race air-to-air intercooler upgrade



2004-2010 F-150 5.4L



2004-2010 F-150 Truck

The High Output Intercooled System for the 2004-2010 Ford F-150 with the 5.4L 3V engine produces an industry leading 60-65% power gain on 8-9 psi of intercooled boost on otherwise stock engines running premium gas.

HO Intercooled System

- 60-65% HP gain
- 8-9 psi boost
- P-1SC-1 supercharger, satin finish
- 2-core air-to-air intercooler
- Utilizes factory 6-rib belt drive
- ProFlow blow-off valve
- PCM tuning provided
- Fuel upgrade components provided (2004-2008 only)

HO Intercooled Tuner Kit

- Omits tuning and fuel system components
- Otherwise identical to HO Intercooled System

Optional Upgrades Include:

- Polished or black finish for supercharger and/or bracket
- Helical gear set for noise reduction
- Supercharger upgrades: D-1SC
- 3-core air-to-air intercooler upgrade



"Much as the ProCharger intercooler changed the supercharger kit landscape, so did ProCharger's precision-ground internal gearbox"
– MotorTrend



1997-2003

F-150 5.4L, 4.6L



1997-2002, 2007-2010

EXPEDITION 5.4L, 4.6L

1997-2003 F-150 Truck and 1997-2002 Expedition

ProCharger HO Systems for the 1997-2003 Ford F-150 produce power gains of 60-65% with 8-9 psi of intercooled boost on otherwise stock engines running premium gas. Tuner Kits and higher boost levels are available for modified engines.

HO Intercooled System

- 60-65% HP gain
- 8-9 psi boost
- P-1SC-1 supercharger, satin finish
- 2-core air-to-air intercooler
- Utilizes factory 6-rib belt drive
- ProFlow blow-off valve
- PCM tuning provided
- Include fuel system components

HO Intercooled Tuner Kit

- Omits fuel system (FMU and pump)
- Otherwise identical to HO Intercooled System

Optional Upgrades Include:

- Polished or black finish for supercharger and/or bracket
- Helical gear set for noise reduction
- Supercharger upgrades: D-1SC
- 3-core air-to-air intercooler upgrade



2007-2010 Expedition 5.4L

ProCharger HO Intercooled Systems provide a ground pounding 60-65% power gain with 8-9 psi of intercooled boost on stock engines running high quality pump gas. They also feature a highly efficient air-to-air intercooler and self-contained P-1SC-1 supercharger. Tuner Kits for higher boost levels are available.





2019-2024 RAM 1500 5.7L RAM 1500 5.7L eTORQUE



2019-2024 RAM HEMI

Bolt on 140-160+ tire-shredding horsepower with a ProCharger system, which delivers more power per PSI that results in safe, reliable boost. Whether you're towing a boat to the lake or commuting to the job site, ProCharger provides massive power gains while ensuring decades of durability—with customers frequently reporting 200,000+ miles of trouble-free performance. Each complete system includes everything needed for installation - no engine modifications or disassembly required - including ECU programming, so you can enjoy smooth drivability, safe power on premium pump fuel, and options for both the standard 5.7L and eTorque engines.

H0 Intercooled System (non eTorque)

- 140-160+ HP gain
- 7 psi of boost
- D-1SC supercharger, satin finish
- Vertically-mounted air-to-air intercooler
- Utilizes factory 6-rib belt drive
- PCM tuning provided
- ProFlow blow-off valve
- Fuel injectors supplied

Stage II Intercooled System (including eTorque)

Same as H0 system, except:

- P-1SC-1 supercharger, satin finish
- 8-rib dedicated belt drive

H0 / Stage II Intercooled Tuner Kits

- Omits tuning and fuel system components
- Otherwise identical to Intercooled Systems

Optional Upgrades Include:

- Black or polished finish for supercharger and/or bracket
- Helical gear set for noise reduction
- Supercharger upgrades: P-1X (Stage II), D-1SC through F-1A-94 (Tuner Kits)
- Race blow-off valve, red or black, open or closed (Stage II)
- ATI Performance Products balancer upgrade (Stage II)



"ProCharger did its job quite well and had all the necessary parts to make this install a breeze"
– Truck Trend

2009-2024 RAM 1500 5.7L CLASSIC



2009-2024 RAM HEMI Classic

Give your 5.7L HEMI the added power it deserves with a ProCharger supercharger system—adding 140–160+ horsepower with safe, efficient boost and crisp throttle response. Perfect for towing, off-roading, or your daily drive, this upgrade delivers serious performance without sacrificing reliability. Backed by a track record of 200,000+ mile durability, each kit is a complete bolt-on solution with no engine modifications or disassembly required and includes ECU calibration for smooth, street-friendly drivability.

HO Intercooled System

- 140-160+ HP gain
- 7 psi of boost
- D-1SC supercharger, satin finish
- Vertically-mounted air-to-air intercooler
- Utilizes factory 6-rib belt drive
- PCM tuning provided
- ProFlow blow-off valve
- Fuel injectors supplied

Stage II Intercooled System

Same as HO system, except:

- P-1SC-1 supercharger, satin finish
- 8-rib dedicated belt drive

HO / Stage II Intercooled Tuner Kits

- Omits tuning and fuel system components
- Otherwise identical to HO / Stage II Intercooled System

Optional Upgrades Include:

- Black or polished finish for supercharger and/or bracket
- Helical gear set for noise reduction
- Supercharger upgrades: P-1X (Stage II), D-1SC through F-1A-94 (Tuner Kits)
- Racing blow-off valve, red or black, open or closed (Stage II)
- ATI Performance Products balancer upgrade (Stage II)



"Fit and finish was second to none, drivability remained intact, and it was a complete bolt-on" – Truck Trend



2014-2024

RAM 2500/3500 6.4L



2014-2024 Dodge HEMI RAM

Unlock 130+ more horsepower for your RAM 2500/3500 HEMI (6.4L) with a ProCharger supercharger system. Designed for both power and reliability, these systems deliver smooth, consistent performance with durability tested beyond 200,000 miles. Increased torque makes towing easier, while the 8-speed transmission ensures an optimized power curve that enhances drivability on and off-road. Installation is quick and easy, with a DIY-friendly design, no permanent modifications required, and compatibility with dual alternators. A large air-to-air intercooler keeps intake temperatures low for maximum performance. Plus, with minimal maintenance and fuel mileage-friendly operation, this upgrade is as practical as it is powerful.

HO Intercooled System

- 130+ HP gain
- 6 psi boost
- D-1SC supercharger, satin finish
- Vertically-mounted air-to-air intercooler
- Utilizes factory 6-rib belt drive
- PCM tuning provided
- ProFlow blow-off valve
- Includes fuel system components
- Includes ECU tuning & handheld
- Power Wagon winch compatible

HO Intercooled Tuner Kit

- Omits tuning and fuel system components
- Otherwise identical to HO Intercooled System

Optional Upgrades Include:

- Polished or black finish for supercharger and/or bracket
- Helical gearset for noise reduction



"We were pretty stoked with the results: 441 rwhp and 417 lb-ft of torque! That's a gain of 154 ponies [at the tire] and 103 lb-ft! Not bad for a day's work on an otherwise stock engine"
– Truckin'

2004-2008 RAM 1500 5.7L



2004-2008 Dodge HEMI RAM

Get 45-50% more power for your Dodge RAM HEMI truck with ProCharger's industry-leading performance and durability. This system comes with everything you need, including the coolest charge air temperatures available and a patented, self-contained supercharger. Designed for easy installation with no permanent modifications, this system is 100% reversible and fuel mileage friendly under normal driving conditions. The low-maintenance supercharger mounts away from heat sources for consistent performance and longevity, with many ProCharged trucks exceeding 200,000 miles. Plus, 50-state legal systems are available, ensuring maximum performance while staying CARB-compliant.

HO Intercooled System

- 130+ HP gain
- 7 psi of boost
- P-1SC-1 supercharger, satin finish
- 3-core vertical high mount air-to-air intercooler
- Utilizes factory 7-rib belt drive
- PCM tuning provided
- ProFlow blow-off valve

HO Intercooled Tuner Kit

- Omits tuning and fuel system components
- Otherwise identical to HO Intercooled System



Optional Upgrades Include:

- Black or polished finish for supercharger and/or bracket
- Helical gear set for noise reduction
- Low mount intercooler option (2006-08 models only)
- Supercharger upgrades: D-1SC (Tuner Kit)



1996-2001

RAM / DAKOTA / DURANGO 5.9L, 5.2L

1996-2001 RAM / 1997-2001 Dakota/Durango

Massive 55-60%+ horsepower gains on Dodge RAM, Dakota, and Durango make driving and towing a lot more fun. ProCharger delivers unmatched power while maintaining the reliability to last 200,000+ miles. Designed for quick, DIY-friendly installation, this system is 100% reversible, requiring no permanent modifications. Fuel mileage remains efficient, while the large air-to-air intercooler and optimized supercharger mounting keep charged air temps low for maximum power and durability. For those who prefer a quieter ride, a helical gearset upgrade is available—perfect for work trucks and daily drivers. Low-maintenance, fuel mileage friendly, and built to perform—ProCharger is the ultimate bolt-on upgrade for your Dodge truck or SUV!

HO Intercooled Tuner Kit

- 215+ HP gain
- 7 psi of boost
- P-1SC-1 supercharger, satin finish
- Vertically-mounted 3-core air-to-air intercooler
- Utilizes factory 6-rib belt drive
- ProFlow blow-off valve included
- Tubing provided
- Retains the factory intake manifold

Optional Upgrades Include:

- Polished or black finish for supercharger and/or bracket
- Helical gearset for noise reduction
- Race blow-off valve
- Supercharger upgrades: D-1SC



"The mad scientists over at ProCharger have been designing industry leading supercharger systems since 1993."

– Truck Trend

2018-2025 DURANGO SRT 6.4L, 5.7L



DURANGO SRT & R/T

2015-2025 Durango SRT & R/T

With a remarkable 160-215+ more horsepower on premium pump gas, the factory tires will do everything they can to help grip the road for sub 4.0 second 0-60 mph times. ProCharger systems employ our patented self-contained P-1SC-1 supercharger and require no engine disassembly or modifications. Plenty of upgrade options to fit your build goals, and the ProCharger-specific calibrations retain OE drivability with an added power kick. Higher boost levels and horsepower are possible with an Intercooled Tuner Kit and custom tuning.

HO Intercooled Systems

6.4L:

- 215+ HP gain
- 7 psi of boost
- P-1SC-1 supercharger, satin finish
- 3-core air-to-air intercooler
- Utilizes factory 6-rib belt drive
- ProFlow blow-off valve
- Includes fuel system upgrades
- PCM tuning provided

5.7L:

- 160+ HP gain
- 7 psi of boost
- P-1SC-1 supercharger, satin finish
- 3 core air-to-air intercooler
- Utilizes factory 6-rib belt drive
- ProFlow blow-off valve
- Includes fuel system upgrades
- PCM tuning provided

HO Intercooled Tuner Kit

- Omits tuning and fuel system components
- Otherwise identical to HO Intercooled System

Optional Upgrades Include:

- Polished or black finish for supercharger and/or bracket
- Helical gear set for noise reduction
- Race blow-off valve
- Supercharger upgrades: P-1X (Stage II), D-1SC through F-1A-94 (Tuner Kit)



"That was the most cool-sounding 582 HP I've ever heard [RWHP, 7 psi otherwise stock 6.4L SUV]" – Engine Power

Jeep 2020-2025 GLADIATOR JT 3.6L

2020-2025 Jeep Gladiator JT

As the leader in Jeep aftermarket supercharging for decades, ProCharger superchargers for the Jeep JT deliver a reliable 40-45%+ power gain on otherwise stock 3.6L engines running premium pump gas. Offering the easiest and quickest installation available, our kits require no permanent modifications. Available with a best-in-class towing capacity of 7,650-pounds, whether you're towing heavy loads, hitting the backroads, or cruising the highway, ProCharger transforms your Jeep Gladiator with massive power gains while maintaining legendary durability—many customers report 200,000+ miles of trouble-free performance.

HO Intercooled System

- 40-45%+ HP gain
- 7 psi boost
- P-1SC-1 supercharger, satin finish
- 3 core air-to-air intercooler
- Utilizes factory 6-rib belt drive
- ProFlow blow-off valve
- Includes fuel system upgrade components
- PCM tuning provided

HO Intercooled Tuner Kit

- Omits tuning and fuel system components
- Otherwise identical to HO Intercooled System

Optional Upgrades Include:

- Black or polished finish for supercharger and/or bracket
- Black intercooler finish
- Helical gearset for noise reduction
- Supercharger upgrades: D-1SC (Tuner Kit)



"ProCharger's supercharger kit for the Jeep Gladiator JT is a home run when it comes to reliable power and remarkable torque"
– Off Road Xtreme

2018-2025 Jeep WRANGLER JL 3.6L (NON-ETORQUE)

2018-2025 Jeep Wrangler JL (NON-ETORQUE)

Unleash the full potential of your Jeep JL with a ProCharger supercharger system, delivering industry-leading power gains of 40-45%+ while maintaining reliability proven to last 200,000+ miles. The High Output (HO) Intercooled System features a shared-drive design with a highly-efficient, self-contained supercharger, and the largest and most effective air-to-air intercooler on the market. Featuring the easiest and quickest installation, our kits were designed with simplicity in mind with no permanent modifications required and with only minor trimming of fan shroud needed for a simple installation. Whether you're towing, hitting the trails, or cruising the highway, ProCharger's smooth and consistent boost enhances performance in any driving condition.

HO Intercooled System

- 40-45%+ HP gain
- 7 psi boost
- P-1SC-1 supercharger, satin finish
- 3 core air-to-air intercooler
- Utilizes factory 6-rib belt drive
- ProFlow blow-off valve
- Includes fuel system upgrade components
- PCM tuning provided
- Retains the factory intake manifold

HO Intercooled Tuner Kit

- Omits tuning and fuel system components
- Otherwise identical to HO Intercooled System

Optional Upgrades Include:

- Black or polished finish for supercharger and/or bracket
- Black intercooler finish
- Helical gearset for noise reduction
- Supercharger upgrades: D-1SC (Tuner Kit)



"A pleasure to experience on or off road...you can add a ton of power to pass with the big tires, and crawl over any boulders you can find by bolting on a highly efficient ProCharger supercharger"
— Off Road Xtreme

Jeep 2012-2018 WRANGLER JK 3.6L

2012-2018 Jeep Wrangler JK

Boost the power on your Jeep Wrangler JK with a reliable 50%+ HP gain! ProCharger's High Output (HO) Intercooled System features a highly efficient, self-contained supercharger and the industry's most effective air-to-air intercooler, a combination proven to last 200,000+ miles. With the easiest and quickest installation available, our kits are designed with simplicity in mind—no permanent modifications are required. Whether you're hitting the trails, towing, or cruising the highway, ProCharger's smooth and consistent boost enhances performance in any driving condition.

HO Intercooled System

- 50%+ HP gain
- 7 psi boost
- P-1SC-1 supercharger, satin finish
- 3 core air-to-air intercooler
- Utilizes factory 6-rib belt drive
- ProFlow blow-off valve
- Includes fuel system upgrade components
- PCM tuning provided


HO Intercooled Tuner Kit

- Omits tuning and fuel system components
- Otherwise identical to HO Intercooled System

Optional Upgrades Include:

- Black or polished finish for supercharger and/or bracket
- Black intercooler finish
- Helical gearset for noise reduction
- Supercharger upgrades: D-1SC (Tuner Kits)



		Other Superchargers
Simple installation process, requiring very few components be removed	✓	✗
Highly effective intercooler with simple installation	✓	✗
Easy and quick pulley change when upgrading boost levels	✓	✗
Supercharger location minimizes heat transfer	✓	✗

2012-2021 Jeep GRAND CHEROKEE SRT 6.4L

2012-2021 Grand Cherokee SRT8

Add 215+ horsepower to your Jeep Grand Cherokee with a ProCharger supercharger kit, delivering more power per PSI for safe, reliable boost and instant throttle response. Whether you're tackling off-road trails, towing with confidence, or enjoying your daily drive, ProCharger transforms your 6.4L SRT with massive power gains while maintaining legendary durability—many owners report 200,000+ miles of trouble-free performance. Each complete system is ready to install, requires no engine modifications, and includes ECU tuning for smooth drivability, effortless power on pump gas, and enhanced all-terrain capability.

HO Intercooled System

- 215+ HP gain
- 7 psi boost
- P-1SC-1 supercharger, satin finish
- 3 core air-to-air intercooler
- Utilizes factory 6-rib belt drive
- ProFlow blow-off valve
- Includes fuel system upgrade components
- PCM tuning provided

HO Intercooled Tuner Kit

- Omits tuning and fuel system components
- Otherwise identical to HO Intercooled System

Optional Upgrades Include:

- Black or polished finish for supercharger and/or bracket
- Helical gearset for noise reduction
- Supercharger upgrades: P-1X (All), D-1SC through F-1A-94 (Tuner Kit)
- Race air-to-air intercooler upgrade



"On the street, power delivery is smooth and linear and there's no debating the cool whoosh noises from the bypass valve"
— **MotorTrend**

Jeep 2011-2021 GRAND CHEROKEE 5.7L

2011-2021 Jeep Grand Cherokee 5.7L

No matter if you are looking to add a bit more “fun” to your daily commute or possibly that extra “grunt” when you tow, this new ProCharger supercharger system delivers up to 160+ horsepower. For those of you that did the math that puts you OVER the rating of the SRT 6.4L Grand Cherokee (at a fraction of the price). Our system also creates sports car like 0-60 mph times, it can only be described as a true “sleeper” of an SUV.

With 7 psi of intercooled boost coming from the highly efficient P-1SC-1 head unit and premium pump gas, you can enjoy that HUGE gain in power. In addition, you can have confidence in the reliability that ProCharger delivers in their power gains and PCM programming for years and years of trouble free performance. ProCharger has been setting the bar for decades on intercooled centrifugal supercharged performance and still does today. Our air-to-air intercooler is the key to keeping inlet air temps to a minimum and power and reliability at a maximum.

HO Intercooled System

- 160+ HP gain
- 7 psi boost
- P-1SC-1 supercharger, satin finish
- 3 core air-to-air intercooler
- Utilizes factory 6-rib belt drive
- ProFlow blow-off valve
- Includes fuel system upgrade components
- PCM tuning provided

HO / Stage II Intercooled Tuner Kits

- Omits tuning and fuel system components
- Otherwise identical to HO Intercooled System

“ProCharger really does their homework, designing powerful supercharger kits that don’t sacrifice driveability or reliability”
— Mopar Muscle



Optional Upgrades Include:

- Black or polished finish for supercharger and/or bracket
- Helical gearset for noise reduction
- Supercharger upgrades: P-1X (Stage II), D-1SC through F-1A-94 (Tuner Kits)
- Race air-to-air intercooler upgrade

CALL FOR 2022+ GRAND CHEROKEE

2006-2010 Jeep

GRAND CHEROKEE SRT8 6.1L

2006-2010 Jeep Grand Cherokee SRT8

ProCharger's 2006-2010 SRT8 Jeep Grand Cherokee system has been a great addition to the most diverse line of superchargers and supercharger systems on the planet. High Output Intercooled Systems and Tuner Kits are available, building on the already solid statistics for the SRT8. They feature an ultra-effective air-to-air intercooler and upgradability that is hands down the best in the industry. With power gains of 160+ HP on 7 psi, the torque and acceleration numbers are nothing short of amazing.

HO Intercooled System

- 160+ HP gain
- 7 psi boost
- P-1SC-1 supercharger, satin finish
- 3 core air-to-air intercooler
- Utilizes factory 6-rib belt drive
- ProFlow blow-off valve
- Includes fuel system upgrade components
- PCM tuning provided

Stage II Intercooled System

Same as HO System, except:

- 8-rib dedicated belt drive

HO / Stage II Intercooled Tuner Kits

- Omits tuning and fuel system components
- Otherwise identical to HO / Stage II Intercooled System

Optional Upgrades Include:

- Black or polished finish for supercharger and/or bracket
- Helical gearset for noise reduction
- Supercharger upgrades: P-1X (All), D-1SC through F-1A-94 (Tuner Kits)
- Race air-to-air intercooler upgrade



"It really is the perfect blend of performance while maintaining utility in one seamless package".
— MotorTrend



2016-2023 TACOMA 3.5L



2016-2023 Tacoma

Whether freshly washed or covered in dirt, adding a ProCharger to your Tacoma delivers the fuel-efficient power you want on the road, backed by a rugged, high-durability design and smooth drivability on the trail. The High Output Intercooled System offers an industry-leading 45% gain in power from a safe and reliable 8 psi of intercooled boost—all with the added muscle that makes towing easier and more confident. Designed for long-term durability and easy installation, this system also includes 50-state street legal options, making it the perfect upgrade for adventure and everyday driving alike.

HO Intercooled System

- 40-45% HP gain
- 7-8 psi boost
- D-1SC supercharger, satin finish
- 3 core air-to-air intercooler
- Dedicated 6-rib belt drive
- ProFlow blow-off valve
- Utilizes factory airbox and filter, making snorkel fitment a breeze
- Includes fuel system upgrade components
- PCM tuning provided

HO Intercooled Tuner Kit

- Omits tuning and fuel system components
- Otherwise identical to HO Intercooled System

Optional Upgrades Include:

- Black or polished finish for supercharger and/or bracket
- Helical gearset for noise reduction
- Intercooler option for aftermarket bumper and/or winch setup
- Black finish for intercooler

CALL FOR TUNDRA 5.7L INFO



“With the predictability of the power curve of the ProCharger, keeping traction was really important and that is the behavior of that supercharger itself [versus a roots style supercharger]”

– Dwight H., @mtnyotas



**2005-2015
TACOMA 4.0L**



2005-2015 Tacoma

ProCharger technology delivers industry-leading 40–45% power gains for Tacomas, along with the quickest and easiest installation on the market. With highly effective air-to-air intercooling, a dedicated belt drive, and the efficient D-1SC ProCharger, this system provides reliable, engine-friendly boost—8 psi—for years of trouble-free use. Optimal mounting locations for both the supercharger and intercooler help prevent heat soak, ensuring consistent performance on and off the road. Plus, with OE-like drivability and available 50-state street legal options, it's the perfect upgrade for daily driving, trail running, and everything in between.

HO Intercooled System

- 40-45% HP gain
- 7-8 psi boost
- D-1SC supercharger, satin finish
- 3 core air-to-air intercooler
- Dedicated 6-rib belt drive
- ProFlow blow-off valve
- Utilizes factory airbox and filter, making snorkel fitment a breeze
- Includes fuel system upgrade components
- PCM tuning provided

HO Intercooled Tuner Kit

- Omits tuning and fuel system components
- Otherwise identical to HO Intercooled System

Optional Upgrades Include:

- Black or polished finish for supercharger and/or bracket
- Helical gearset for noise reduction
- Intercooler option for aftermarket bumper and/or winch setup
- Black finish for intercooler



CALL FOR TUNDRA 5.7L INFO



2010-2024 4RUNNER 4.0L



2010-2024 4Runner

Whether you're chasing more power for the daily drive or looking to enhance your weekend adventures, ProCharger supercharger systems deliver a proven, industry-leading 40-45% increase in power to 4Runners—without compromising drivability. These systems are engineered for real-world use, with 50-state street legal options available and seamless integration for enhanced performance and throttle response. The high-efficiency air-to-air intercooler and dedicated belt drive maximize cooling and boost efficiency, while the rugged design ensures long-lasting, worry-free operation on road and off.

HO Intercooled System

- 40-45% HP gain
- 7-8 psi boost
- D-1SC supercharger, satin finish
- 3 core air-to-air intercooler
- Dedicated 6-rib belt drive
- ProFlow blow-off valve
- Includes fuel system upgrade components
- PCM tuning provided

HO Intercooled Tuner Kit

- Omits tuning and fuel system components
- Otherwise identical to HO Intercooled System

Optional Upgrades Include:

- Black or polished finish for supercharger and/or bracket
- Helical gearset for noise reduction
- Intercooler option for aftermarket bumper and/or winch setup
- Optional ProCharger intake manifold cover, satin or black finish



"The thing feels like a beast...It's unbelievable, the torque that's being distributed to these wheels. I really love that I made the decision to go with ProCharger."
— Ty, @mtnyotas



SCAN FOR
FULL VIDEO

OFF-ROAD & OVERLANDING



SCAN FOR
FULL VIDEO

More Power Means More Enjoyment During Your Adventure

From street-bound vehicles with bigger wheels and tires or more serious off-road enthusiasts with heavily modified and accessorized vehicles, changes such as these can reduce the performance and efficiency of your engine. Adding a ProCharger allows you to get reliable, fuel mileage-friendly power you want during your adventure.

Reliable Supercharging Even In Extreme Conditions

Desert heat in Johnson Valley, remote camping in Alaska...off-roading and overlanding depend on having the most reliable components. For over 30 years, ProCharger has been offering the most well-engineered supercharger kits to ensure you are receiving the largest power gains and greatest durability available.



**OffROAD
XTREME**

RACING DOMINATION

REAL WORLD PROCHARGER POWER

ProCharger Motorsports

ProCharger has a long, 30+ year history of helping an incredible number of enthusiasts and racers accomplish their performance goals: WINNING! From drag strips to off-road, and from the salt flats of Bonneville to open road races and rear-wheel dyno competitions, more and more ProCharger owners are reaching and exceeding their performance goals in amazing fashion.

When it comes to motorsports, talk is cheap. It seems like there are always too many aftermarket manufacturers willing to inflate their performance claims. ProCharger-equipped racers prefer to let their actions and results speak for themselves.

ProCharger and Racing: A Winning Combination

ProCharger superchargers are synonymous with high performance, especially in sanctioned drag racing competition. ProCharger was the first centrifugal supercharger to power racers into the 6's. As a matter of fact, as far back as 2002, every single Super Street and Street Outlaw racer in the 7's, and Renegade racer in the 8's were all ProCharged. Once the ProCharger supercharger power genie was out of the bottle, there was no looking back—unless you count looking in the mirror for the other guys.

The list of ProCharged racing champions, record holders and top performers reads like a Who's Who of winning racers. No one else even comes close, as ProCharged racers have won over 250 national championships in the past 20 years, more than all of our direct competitors combined.

We Race, You Win

The same design philosophy that puts top racers into the winner's circle can be found in every street-legal ProCharger supercharger system. With a ProCharger system, not only will you receive the largest and most engine-friendly horsepower gains, you also have the peace of mind knowing that your supercharger was designed to reliably and consistently produce event and championship-winning power race after race, year after year. What are your high-performance goals? Let ProCharger help you blow them away.



Michael Rieck's 1971 C10 is powered by a 3,500+ HP 588 Visner engine and a ProCharger F-4X-140-1. With the engine built by Bullet Racing and the chassis by Larry Jeffers, this truck runs low 3.80s in the eighth mile and has claimed wins at premier events like Lights Out and Outlaw Armageddon.

Consider these ProCharger Motorsports Achievements:

- ProCharged racers have won over 250 national championships in the past 20 years
- The ONLY centrifugal supercharger to run 3.40's in 1/8th mile
- The FIRST centrifugal supercharger to make 4,000 horsepower on methanol
- In drag racing, the 80 quickest centrifugal racers are all powered by ProCharger
- HOT ROD Pump Gas Drags Championship, HOT ROD Drag Week Championship, and Maxton Mile Top Speed Challenge Winner
- First centrifugal approved for NHRA Pro Mod

"[ProCharger is] leading the charts across the board in a multitude of different sanctions and series, setting records, breaking hearts..."
— Wes Buck, Drag Illustrated

F-SERIES

1,050 - 4,500+ HP

ProCharger F-Series Superchargers

ProCharger F-Series superchargers were designed with one simple goal: blow the competition away. Since their introduction in 2000, ProCharger's ever-expanding lineup of F-Series superchargers have continued to be the standard by which others hope to be measured, both on the track and on the street. From the custom designed 7075 billet aluminum impeller to the CNC machined transmission case to the industry-exclusive, compound bearing design, each self-contained F-Series supercharger has been designed to deliver maximum performance, pass after pass, year after year, championship after championship.

F-1, F-1D, F-1A and F-1A-94

These ProCharger superchargers utilize a compact, 9" volute and are powerful and highly versatile superchargers. Like all the F-Series models, the F-1 and F-1A feature the industry-exclusive compound bearing design that supports high horsepower applications, while the patented and proven self-contained oiling design eliminates the need for external oil lines while providing years and years of trouble-free high performance.

F-1C and F-1R

These two ProCharger superchargers use a slightly larger, 9.75" volute for higher airflow and HP ratings and retain all the design advantages of the other F-Series models.

F-2, F-3, and F-4 Models

Higher horsepower means higher airflow and bigger boost. Enter the F-2, F-3, and F-4 ProCharger models, with their industry-leading performance and durability. To learn more, visit procharger.com or call the ProCharger Sales Team at (913) 338-2886.



F-1X for Max Power

The ProCharger F-1X features a 10.5 inch volute diameter and provides a significant increase in airflow when compared with the 9 inch and 9.75 inch ProChargers. Considered by many to be the ideal combination of small size and high performance, the F-1X can support up to 1,400+HP.

Base HP (NA Engine) ...375-550 HP
Max Supercharged HP.... 1,400 HP
Maximum Airflow 2,000 cfm
Maximum Boost..... 38 psi
Maximum Impeller RPM72,000
Internal Step-up Ratio 5.40:1

F-1D

Base HP (NA Engine) ...300-500 HP
Max Supercharged HP....1,050 HP
Maximum Airflow1,500 cfm
Maximum Boost..... 34 psi
Maximum Impeller RPM65,000
Internal Step-up Ratio 5.40:1

F-1A-91

Base HP (NA Engine) ...300-500 HP
Max Supercharged HP.... 1,200 HP
Maximum Airflow1,600 cfm
Maximum Boost..... 38 psi
Maximum Impeller RPM74,000
Internal Step-up Ratio 5.40:1

F-1A-94

Base HP (NA Engine) ...300-500 HP
Max Supercharged HP.... 1,300 HP
Maximum Airflow1,625 cfm
Maximum Boost..... 38 psi
Maximum Impeller RPM74,000
Internal Step-up Ratio 5.40:1

F-1A

Base HP (NA Engine) ...300-500 HP
Max Supercharged HP....1,100 HP
Maximum Airflow1,575 cfm
Maximum Boost..... 38 psi
Maximum Impeller RPM74,000
Internal Step-up Ratio 5.40:1

F-1C

Base HP (NA Engine) ...300-550 HP
Max Supercharged HP....1,100 HP
Maximum Airflow1,625 cfm
Maximum Boost..... 38 psi
Maximum Impeller RPM74,000
Internal Step-up Ratio 5.40:1

F-1R

Base HP (NA Engine) ...375-550 HP
Max Supercharged HP.... 1,250 HP
Maximum Airflow1,700 cfm
Maximum Boost..... 38 psi
Maximum Impeller RPM68,000
Internal Step-up Ratio 5.40:1

BUILDING THE POWER

INVENTED, ENGINEERED, AND MADE IN THE USA

Made in America

ProCharger products are of the highest quality, with proven reliability, and possess the most sophisticated engineering. To meet these standards, we make nearly all products in-house, which also helps to ensure the industry's best availability.

Raw metal arrives at our factories regularly, most commonly 7075 and 6061-T6 aluminum. They are processed by our machine shop using high precision CNC machines into compressor wheels, gearboxes, brackets, and more. Our intercooler cores are welded by hand by our highly-skilled fabricators. We aren't dependent on other vendors to do this work for us, so we can easily flex production up or down, based on demand. Parts are inspected by our quality control team using precision measuring equipment to guarantee the parts match the design.

Each ProCharger system comes equipped with a supercharger, typically an integrated intercooler system, a supercharger bracket assembly, fuel system upgrades (if needed), tuning, clamps, and all other parts needed to make the installation process straightforward. Given the vast amount of part numbers, our shipping crew has a meticulous process in place to ensure all packages contain the proper components. Each evening, shipping companies collect our bounty of boxes, which find their way to your door within a few days.



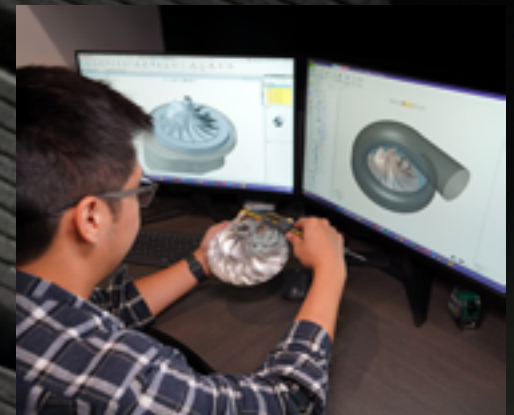
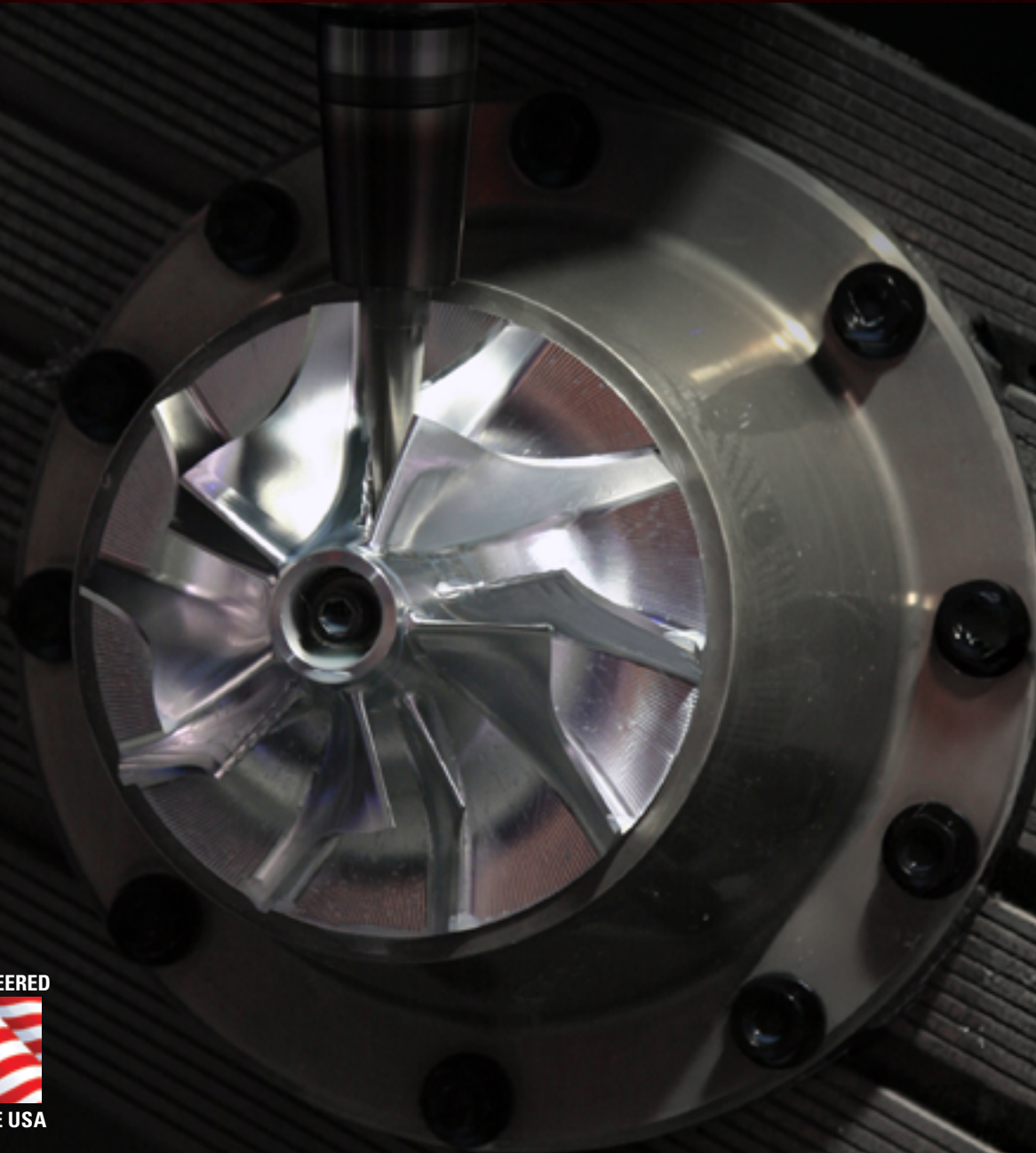
*ProCharger Campus
Kansas City*



Mill Valley, CA Office

"ProCharger takes pride in this kit being designed and manufactured in the U.S. of A."

– GM High-Tech Performance



INVENTED, ENGINEERED



AND MADE IN THE USA

LEADERSHIP THROUGH INNOVATION

ENGINEERED QUALITY AND PERFORMANCE

State-of-the-Art Test Facility

To ensure that ProCharger superchargers are the best available, ProCharger's campus in Kansas City includes the industry's largest and most capable test lab, which allows ProCharger engineers to simultaneously perform aerodynamic, gear case, and long-term durability testing.

Beyond the Test Lab - Real World Insights

A hallmark of the company's innovation success has been a thorough understanding of engine dynamics and real-world application needs. Our testing in the lab and on the dyno is augmented with testing at the track. Real-world performance from both ProCharger vehicles and customer feedback are the ultimate proving grounds, guiding product refinements and ensuring every ProCharger system delivers reliable, repeatable results where it matters most—on the street, strip, or trail.

Aerodynamics Testing

Industry-leading power is highly dependent upon world class aerodynamic efficiency from our compressor sets. ProCharger's aerodynamics test lab utilizes state-of-the-art equipment and multiple test cells. This advanced setup allows us to precisely measure, analyze, and refine compressor performance across a wide range of conditions, ensuring maximum boost.

Industrial Applications Influence

In addition to expertise from test lab, street, off-road, and track testing, ProCharger benefits from technology developed by Inovair, the company's industrial division. Inovair applies the same supercharger technology for 24/7 nonstop operation with compressor efficiencies over 80%. The engineering learnings from Inovair is shared throughout the organization and drives advancements in ProCharger superchargers.



Welded to Win: Precision Fabrication That Powers Performance

ProCharger's in-house welding delivers unmatched craftsmanship on everything from intercoolers to intake manifolds. With expert-level precision and consistent quality, our welds ensure maximum durability—built to perform and built to last.



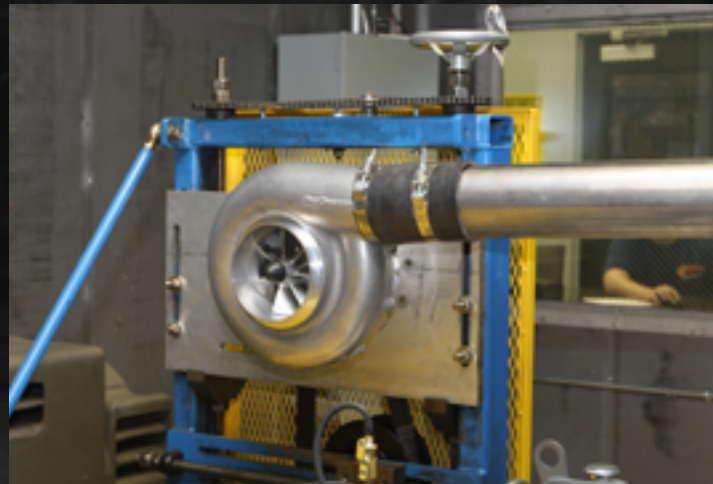
Test lab, building #2 of ProCharger campus



Chassis dyno (1 of 2), building #3



Engine dynos, building #1



Aerodynamic test station, (1 of 6) in lab, building #2



Vehicle R&D, building #3



PROCHARGER DNA

Industrial and Military Reliability



ProCharger shares engineering, manufacturing, and quality control resources with Inovair, which evolved from ProCharger technology in 1998 and produces industrial use “superchargers” built to run 24/7 for 20+ years. Utilized in military applications, aircraft ground support equipment, clean water plants and other uses, Inovair’s cutting-edge expertise and state-of-the-art capabilities help ensure that ProCharger products and processes are the best possible, delivering unbeatable performance and durability. Both ProCharger and Inovair are headquartered on the same 4-building campus in Kansas City, with team members from both divisions located in the company’s Mill Valley, CA office as well, near Sonoma Raceway. For more information, visit Inovair.com.



ProCharger P-1X (9”) and Inovair 9400 (29”) Models



F-35, Deicing and Pre-Conditioned Air Both Supplied by Inovair Blowers



*Inovair IM-20 Blower Packages
at Midwestern Clean Water Plant*



*ProCharged Inovair Field Service Truck
at Kansas City HQ Campus*



Air Force One, Inovair Blowers Deliver Forced Air Deicing



Inovair Booth at WEFTEC Trade Show



*Inovair IM-30 Blower Packages
(Continuous Duty) at Winery in California*

Self-Contained Superiority

ProCharger self-contained superchargers were designed specifically to be self-lubricating, not as an afterthought. Not only does this make our superchargers easier to install, but this patented, gear-driven, self-contained design is durable enough to be available with the best warranty in the industry.

Industry leading 4.10:1 step up ratio

Precision ground gears provide unmatched durability

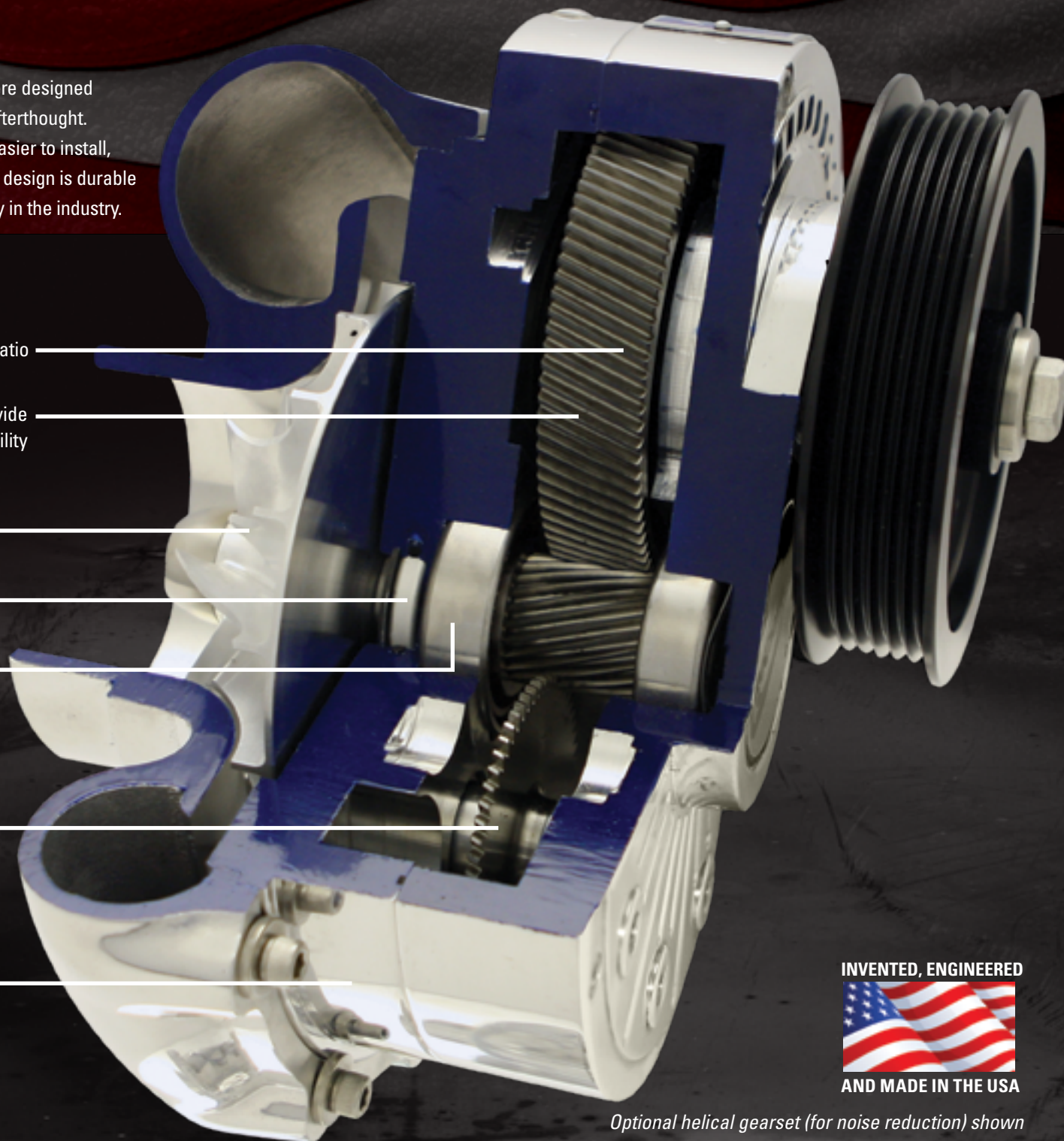
Exclusive 7075 T-6 billet impeller

Custom Teflon composite high pressure dual lip seal

Precision high speed rated aerospace spec support bearings

Patented aeration system provides self-contained oiling with superior bearing lubrication

Exclusive CNC machined 6061 billet aluminum housing ensures precise shaft alignment



INVENTED, ENGINEERED



AND MADE IN THE USA

Optional helical gearset (for noise reduction) shown

SUPERCHARGER LEADERSHIP

DESIGNED TO BLOW AWAY THE COMPETITION™

Pioneered Self-Contained Oil Supply

ProCharger introduced the industry's first self-contained, gear-driven supercharger in 2000. Since then, this patented and proven self-contained design has become the standard by which other superchargers are measured. By freeing the supercharger of the engine's oil supply, you don't have to punch a hole in your oil pan, motor oil contaminants are eliminated, and our units work great for dry sump or custom applications where blower locations would be limited by motor oil drain back. You also avoid the risk of clogged oil feed lines and oil drainage problems. Testing has shown self-contained superchargers run cooler than those fed by engine oil. Independence from engine oil allows a ProCharger to operate seamlessly under extreme conditions, like arctic cold and desert heat.

The Secret to Our Oiling System Success...

At the heart of the ProCharger self-contained design is a simple, but highly effective oil aerator that creates an effective oil mist lubrication for the precision bearings and gears. This design does not require priming at start-up, and oil changes are only required every 6,000 miles.



MOTORTREND

*"Based on ProCharger's history of many firsts in the bolt-on supercharger market...[such that] over the **past 30 years**, improvements to supercharger kits in general can in large part be attributed to ProCharger, resetting the performance ...bar higher for everyone. **This isn't hype, but a matter of historical record.**"*

— MotorTrend, 2023

Leading the Way in Intercooled Supercharger Systems

While it is common to have intercooling on supercharging applications today, that was not the case when ProCharger launched its first products in 1994. Cooler air means more power potential from the engine, so from the beginning ProCharger sought out air-to-air intercooling as a way to lower intake air temps. It's a compliment to see that our principles and practices have inspired other supercharger manufacturers to follow suit. To learn more about ProCharger's intercooler designs and options, see pages 51-54.



The First to Use Billet...Everywhere

Using state-of-the-art, five-axis CNC machines, ProCharger crafts our superchargers from billet everywhere we can. ProCharger's proprietary impeller designs are crafted from aircraft-grade 7075 T-6 aluminum alloy for tremendous strength and performance. The brackets, serpentine drive pulley, and supercharger gearcase are made from billet 6061 aluminum. With a higher strength to weight ratio, our superchargers are lighter and can produce higher pressure, flow more air and, in turn, produce more power.

- **Why are ProCharger parts machined from aerospace-quality aluminum billet?**

To give you more boost, airflow, and power! Billet components offer strength unmatched by more commonly used castings. The material tensile strength for most aluminum castings is 32,000-36,000 psi as compared to the 7075 T-6 alloy used in ProChargers which is 83,000 psi, allowing for greater weight savings and tighter tolerances to yield the largest power gains.

- **What other benefits do billet parts offer?**

By using billet, ProCharger is able to test and evaluate new design shapes and is not confined to a basic design that may only be "trimmed" in an attempt to meet the needs of a given application. Billet components also avoid common issues seen in castings, like density variations, porosity, and inclusions.

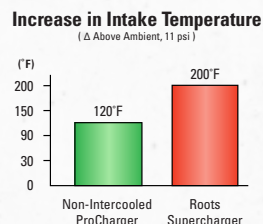
“ Any time that you compress air, like with a supercharger, that creates heat, and heat is the enemy of horsepower. An air-to-air intercooler takes that hot blast of air and cools it down. This [Intercooled ProCharger system] will give you a 65% increase in power. That’s more than any other supercharger on the market.” – “Trucks!” TV

ProCharger is a Class Above All Other Power Adders

Proven by dealers, racers, and vehicle owners around the world, no other form of aftermarket power-adder provides the combination of power, reliability, ease of installation and maintenance, engine safety, and cool operation of a ProCharger. Let’s take a look at why ProCharger is superior to other power-enhancing options.

Positive Displacement Blowers

Centrifugal superchargers offer substantially higher adiabatic efficiencies than their positive-displacement (PD) counterparts. PD blowers are located on top or nestled in the “V” of the engine, placing them in a very hot, harsh environment, which results in significantly hotter charge air temperatures. To cope with these high charge air temperatures, PD blowers must be tuned extremely rich with less timing, which reduces the vehicle’s fuel efficiency, drivability, power, and engine longevity.



Turbochargers

Turbo systems’ initial cost and complexity make them less practical for everyday street driving. Because a turbo relies on hot engine exhaust to create power, they also create high exhaust temperatures and back pressure, high charge air temperatures and are subject to “lag” that degrades their real-world driving performance. Additionally, turbos require engine oil feed and return lines for lubrication and due to extreme heat, increases the thermal breakdown of your engine’s oil.

Nitrous Oxide

Initially, nitrous may look like a bargain, but a review of the facts reveals otherwise. Nitrous oxide accelerates the combustion rate, which in turn increases peak cylinder pressures. This combination greatly increases the probability of piston-melting pre-detonation. This rapid increase in cylinder pressure also increases the load placed on internal engine components. Additionally, nitrous oxide adds the expense and hassle of constantly having to refill bottles and is not always available when you need it.

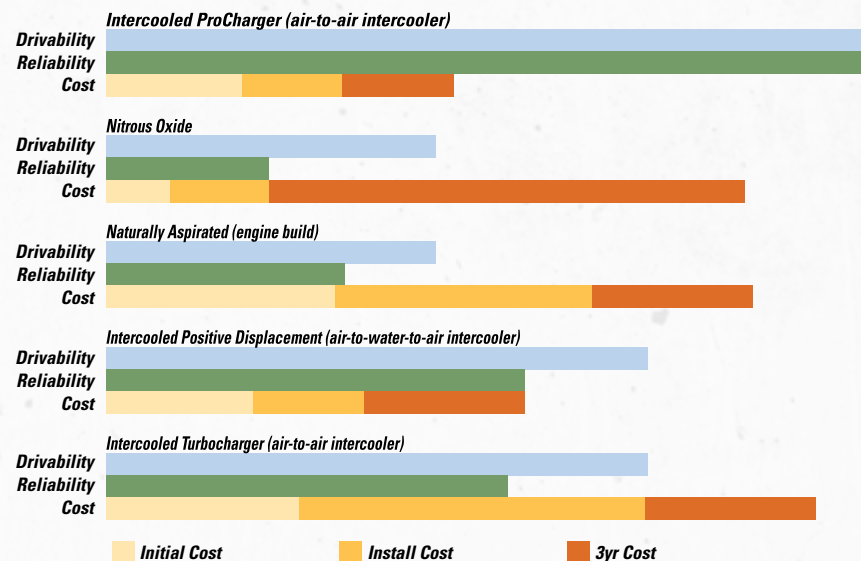
Weight Advantage

ProCharger supercharger kits offer a significant weight advantage over traditional screw and roots-style blowers, enhancing both performance and handling. Positive displacement blowers are heavier, increasing the overall vehicle weight and making them a bigger challenge to install. The lightweight, self-contained ProCharger system keeps weight lower for a lower center of gravity, making for a faster, more agile ride.



Power Adder Comparison

Comparison for Making 575-600+ When Starting With a Stock 6.2L Engine



COOLER IS BETTER

TECHNOLOGY ADVANTAGE

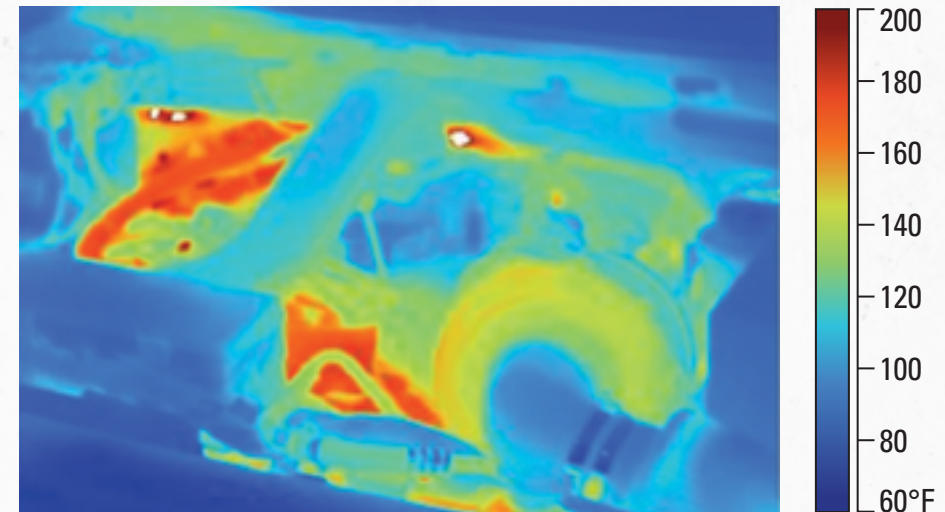
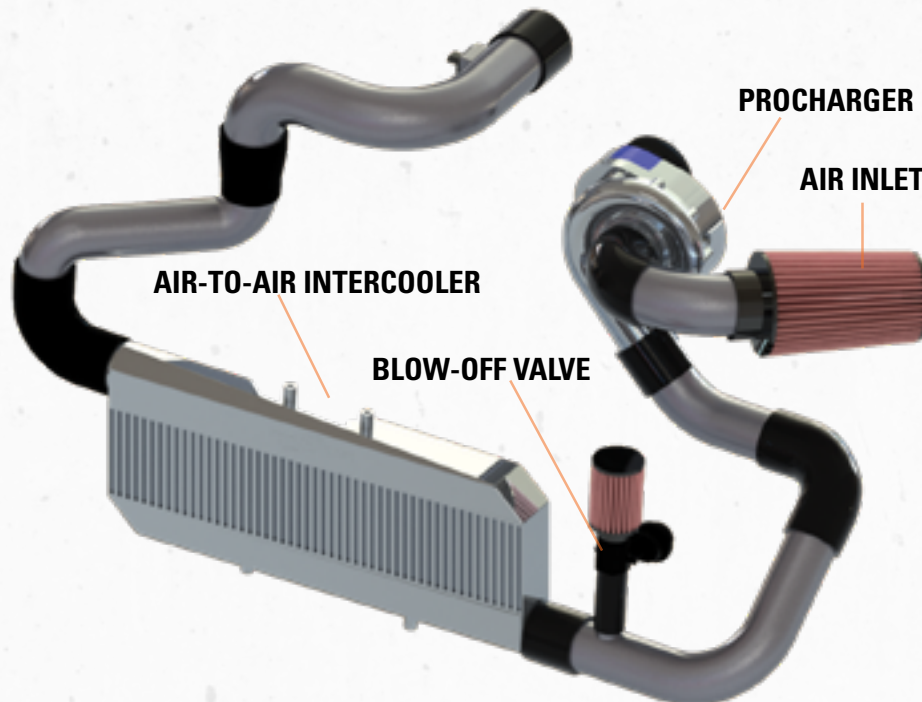
“Because of the extraordinary efficiency of both the ProCharger and intercooler, intercooled ProCharger systems feature the coolest intake temperatures”
– *Sport Truck*

Thermal Advantages

It's really quite simple: cooler air is more dense. Denser air is able to produce more power. If your goal is to produce maximum reliable power, then you want the coolest charge air temperatures possible. When it comes to producing consistent and reliable power, heat is the ultimate enemy. Unlike other forced induction systems, which generate excess heat that limits your initial power gains and causes power fade as the engine heats up, ProCharger delivers consistent performance pull after pull.

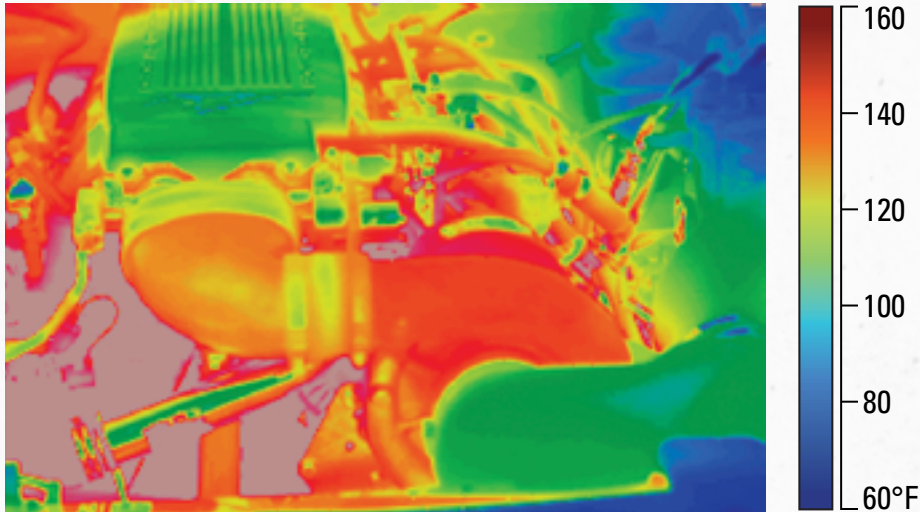
These images illustrate the thermal advantages of a ProCharger supercharger system when compared with a turbocharger and positive displacement blower. By their very design, centrifugal superchargers are more efficient compressors and create less heat during their operation. Additionally, ProCharger superchargers are mounted in front of the engine which is a much cooler environment than on top of the engine or if plumbed into the engine's exhaust.

Turbochargers require hot engine exhaust to compress air. The result is a very hot turbine and turbine housing which transfers heat to the compressor. Turbochargers also create high exhaust gas temperatures and back pressure, causing additional heat build up in exhaust manifolds, cylinder heads and valves.

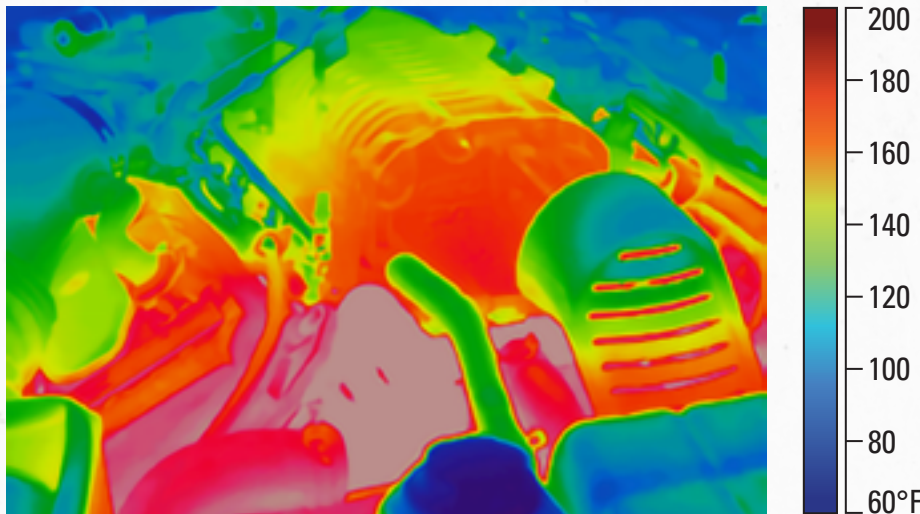


Intercooled ProCharger, 8 psi

"The normal, closed loop air-to-water intercooler system, [not using ice] is *not as effective as a properly designed air-to-air intercooling system* since the cooling medium or the liquid coming from the front heat exchanger is always warmer than the ambient air temperature." – "All About Intercooling", George Spears



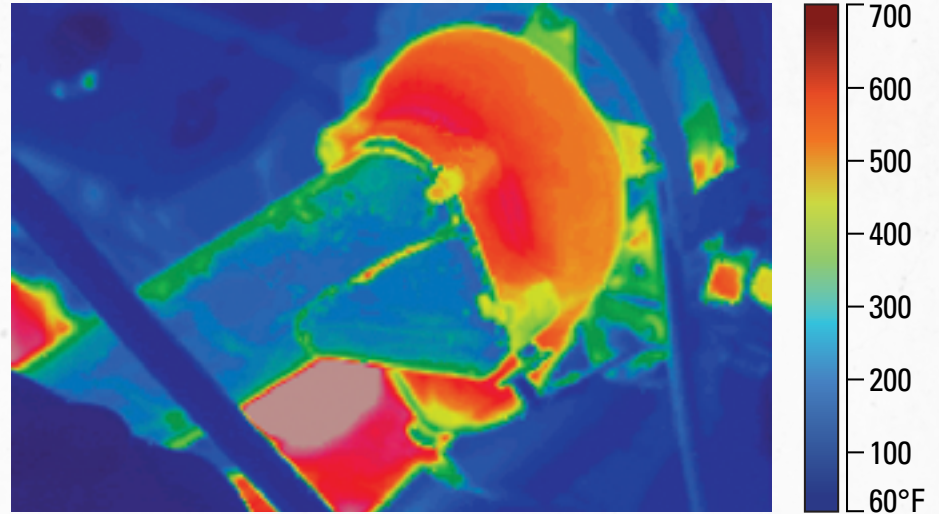
Other centrifugal, non-intercooled, 9 psi



Positive displacement w/ air-to-water-to-air intercooler, 8 psi

Positive-displacement (PD) blowers are typically located directly on top of the engine or deep between the cylinder heads. Because they are attached to or surrounded by hot engine components, this is an extremely hot environment. Now add the heat created by their lower-efficiency compressors and you end up with a hot compressor producing hot, compressed air.

The location of a PD blower necessitates the use of a complex intercooling system which is also located in a hot and heat-soaked environment. Heat is the enemy of consistent and reliable power in general, but especially on direct injection engines, which experience substantial power fade when exposed to excess heat.



Turbocharger

IMPORTANCE OF INTERCOOLING

COOLER AIR FOR MAXIMUM PERFORMANCE

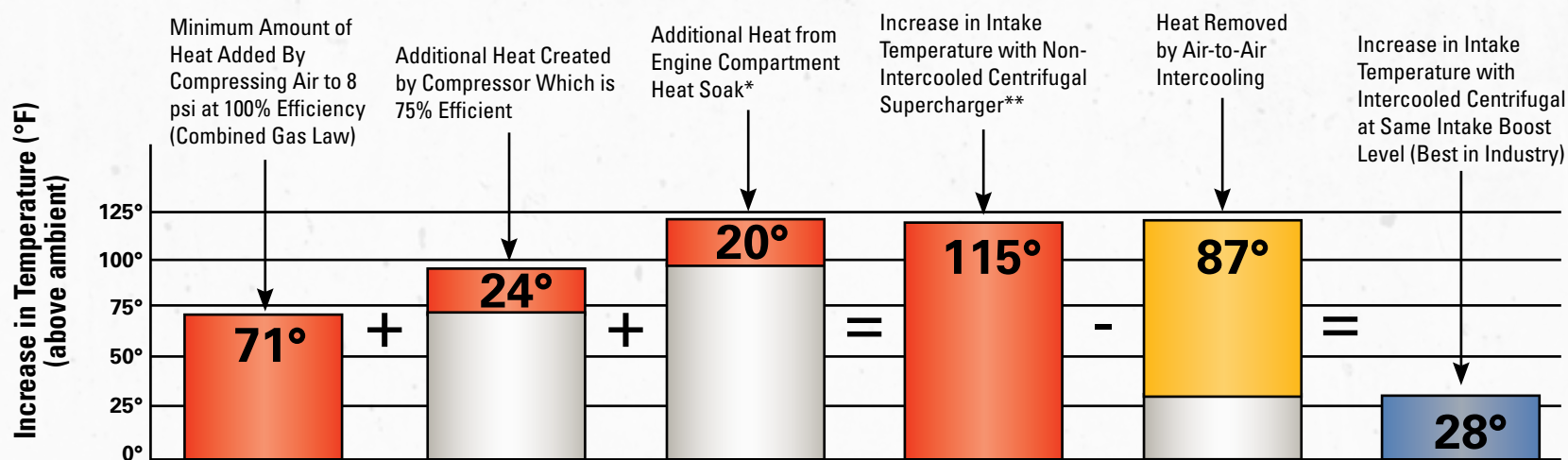
Intercooled Supercharger Kits

A centrifugal supercharger alone is a potent power adder. When paired with an intercooler, it becomes a power multiplier! One benefit of an intercooler is that it can be purchased upfront or added later. It allows greater power gains without needing higher octane fuel. While centrifugal superchargers already outperform roots-style units due to lower discharge temps, adding an intercooler amplifies the effect. Compressing air increases its temperature (Boyle's gas Law), and excessive combustion temps can cause detonation—an engine's worst enemy. An intercooler removes heat from the air charge, increases its density, and gets more air into the cylinder. It also reduces boost levels (as does increased displacement or airflow improvements) while increasing HP. Boost is just a measure of the engine's resistance to incoming air; more restriction = more pressure. Boost alone doesn't tell the full story—it's the increased air density that drives power gains. Intercooling also lowers temps, allowing more spark advance and more power. A 350 HP, 9:1 compression engine can hit 540 HP with 10 psi non-intercooled boost on pump gas. Add an intercooler, run 14–16 psi, and you'll see 700 HP—still on 91–93 octane, without sacrificing reliability.

Types of Intercoolers

For street applications, including those that will see occasional duty at the track, air-to-air intercoolers deliver consistent, trouble free performance. For race only applications, air-to-water intercoolers offer very good charge air temperature reduction when used in conjunction with a mixture of ice and water, but can be a poor choice for street use. In order to deliver the full benefit, an intercooler must also be appropriately sized. Use of an intercooler that is too small for your application will result in inferior performance as it will restrict airflow and/or fail to remove a sufficient amount of heat from the air charge. Though there is no harm in doing so, little benefit will be observed when using a larger than recommended intercooler. ProCharger has a full line of intercoolers engineered for use in centrifugally supercharged applications.

ProCharger was the first to offer supercharger systems with integrated intercooling for the Truck/SUV market, over 25 years ago and nearly 5 years before its nearest competitor.



“When space permits an adequately sized air-to-air intercooler to be fitted and given access to decent air flow, *it will prove superior.* The only excuse for a liquid-based intercooler is when severe space restrictions exist [including positive displacement superchargers, due to mounting location] or ... where an iced coolant can be used.”
– **“Supercharged”, Corky Bell**

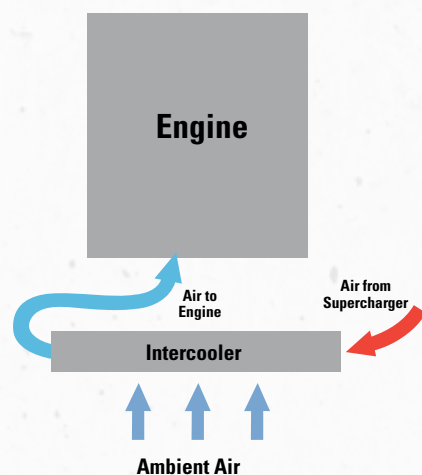
Air-To-Air Simplicity and Durability

It's a simple fact of physics: cooler air makes more power. On street driven vehicles, air-to-air intercooling is a natural fit because it locates the intercooler at the front of the vehicle where it is exposed to a constant supply of cooling airflow. Engineered with large-volume air plenums, ProCharger's air-to-air intercoolers utilize a highly effective and extremely durable bar-and-plate intercooler core design that provides large surface areas for superior levels of heat dispersion.

Simple, easy-to-install and maintenance free, ProCharger's air-to-air intercooler design provides the coolest charge air temperatures for the largest power gains. With no water pump, electrical wiring or water lines to install or fail, air-to-air technology is also the most durable form of intercooling.

Air-to-air intercooling is a highly effective one step process and represents a fundamental ProCharger advantage. Compressed air enters one side of the intercooler, making its way into the bar and plate core. Once in the core, the compressed air is cooled by the airflow moving through the passages or fins of the intercooler. Next, this cooler, denser air is routed into the throttle body and into the engine. ProCharger air-to-air intercoolers typically feature best in class effectiveness of 70-80%. Air-to-water intercooling for the street (technically air-to-water-to-air) is a two step process, with the heated air being cooled by water in the first heat exchanger, and then the heated water cooled by air in the second heat exchanger.

One Step Process: Air-to-Air



Role of Blow-Off Valves With Intercooling

When using an intercooler system, a surge/blow-off valve should be incorporated into the system. The use of this valve allows excess charge air to be vented to the atmosphere under high rpm/low airflow situations, thereby preventing harmful compressor surge.



“ Overall, air/liquid systems are more complex, since a circulating pump and front air exchanger are necessary and they are heavier than an air-to-air unit of equal cooling capacity.”

– **“All About Intercooling”, George Spears**

SHOW, GO, & TOW

PLAY HARD, WORK HARD

Street

ProCharger superchargers deliver instant throttle response and unmatched power gains, enhancing daily drivability without compromising fuel economy.

Towing

Are you hauling your race car to the track or dragstrip? Pulling a fifth-wheel trailer or boat? ProCharger is the perfect solution for added power.

Show

Maybe a lifted show truck is your thing, or a high horsepower street custom riding low. Turn heads at events or compete for best-in-show with a ProCharger.

Overlanding

If you live for remote trails and the thrill of the unknown, and if your rig's built to chase the horizon, a ProCharger gives you the power to haul and explore like never before.

Race

ProCharger race trucks are built to haul—and we don't mean just cargo. From drag strips to no-prep tracks, to off-road competition these boosted beasts lay down serious power with ProCharger's legendary competition supercharger models.

Off-Road

When the terrain gets rough, you need dependable boost. ProCharger gives you the power to crawl, climb, and power through the toughest trails.



UNMATCHED POWER

WORD ON THE STREET

MOTOR TREND

FORD MUSCLE

HOT ROD

LSX
MAGAZINE

**SUPER
CHEVY**

**Classic
TRUCK**
PERFORMANCE

**OFFROAD
XTREME**

**STREET
MUSCLE**
MAGAZINE

RPM
MAGAZINE

"If you're in the market to get your late-model GM truck or SUV boosted, ProCharger should be your number one provider."

– **Offroad Xtreme**

"Bolting on the ProCharger also increased our gas mileage"

– **Sport Truck**

"With all of the added performance gains, the Silverado maintains its daily drivability - after all, the engine has been modified to be more efficient."

– **MotorTrend**

"The best part is, though; an average gearhead can put this on in just a few hours."

– **Stacey David, Gearz TV**

"The driveability of the system was tested when we loaded down the truck with a 7,000 pound boat and trailer and a bed full of weekend boating gear, and traveled a couple of hundred miles over hilly highway toward The Lake of the Ozarks in humid 85-degree weather. Even under boost conditions, as the truck effortlessly pulled the weight up long hills for long periods of time, the engine's coolant temperature never surpassed normal operating temperatures."

– **Sport Truck**

"The intercooled ProCharger centrifugal supercharger system [modified 4.6L engine with F-1A] served up an astonishing 962.6 lb-ft of torque."

– **MotorTrend**

"This combination allows the engine to create a tire-shredding 540 rear-wheel hp and a stump-pulling 480 lb/ft of torque." [Stock LS1 Long Block, LS6 intake, E85]

– **GM High-Tech Performance**

"ProCharger supercharger systems feature easy installation, minimal relocation of components, no need for external oil feed or return lines, and avoid having to deal with the complexity and maintenance issues of an air-to-water-to-air intercooler configuration"

– **Street Trucks**

"By using an air-to-air system, more boost can be applied to the motor without fear of detonation"

– **Truckin'**

"This [ProCharged] Silverado RST is a wolf in sheep's clothing...Under the hood is a Procharged 6.2L V8 that pumps out almost 600HP & is mated to a 10-speed automatic transmission."

– **Rati's Rides**

"Just one romp of the throttle from a standstill, it becomes quite clear that the centrifugal blower is every bit the equal of a roots blower when it comes to low-end grunt"

– **Popular Hot Rodding**

"The cool thing about ProCharger is they have been the leader in aftermarket blowers for so many years that along with the big power bump, their installed superchargers look like they came right from the factory."

– **Street Muscle**

"Everything that you would expect from a ProCharger supercharger was delivered to us in spades. Time spent working [on installation]: 5 1/2 hours. Degree of difficulty: Intermediate."

– **Truckin'**

PROVEN HISTORY

TIMELINE OF POWER

1994 - 96



ProCharger introduces the first air-to-air intercooled aftermarket supercharger system, featuring the P600 ProCharger supercharger.

The first blow-through centrifugal supercharger kit for carbureted Chevy muscle cars and classic trucks is debuted by ProCharger.

State-of-the-art, CNC-machined billet impellers, a ProCharger exclusive, are introduced with the P600B. Designed for use with big blocks and intercooling, the P600B outflows other street-legal models by more than 65%.



ProCharger is the first centrifugal supercharger manufacturer to successfully supercharge marine engines and is also the first to offer integrated intercooling.

1997 - 99



ATI / ProCharger moves into their own, newly-constructed, state-of-the-art manufacturing facility. The new location serves as engineering, R&D, technical service, customer service and marketing headquarters, leading to a period of unprecedented product expansion.



ProCharger introduces the first intercooled supercharger system for a GM truck, nearly five years before others, substantially raising the bar for performance and engine longevity.



An Intercooled ProCharger System is the first to become 50 state legal with more than 8 psi of boost.

2000

The first self-contained, gear-driven supercharger, the P-1SC, is produced by ProCharger. The patented design requires no external oil lines and becomes the industry standard.



An industrial customer uses a D-1 ProCharger to win a U.S. Air Force contract for an aircraft deicing system which utilizes forced air.



The all-new ProCharger F-Series superchargers (above) dominate racing. Jim Summers becomes the first Pro 5.0L racer to run 7.20's with a stunning 7.26 @ 193 mph and later joins the ProCharger staff in 2002.



2001 - 02



Self-contained ProChargers generate 2,000+ hp on 400 cid small blocks and dominate all others at the race track.



The industry's first intercooled supercharger for a Ford truck is introduced by ProCharger, producing 60-65% power gains on 1997-2003 F-150's. Soon thereafter, ProCharger debuts the first intercooled systems available for Dodge 5.9L and 5.2L Ram trucks.



When paired with a stock 5.4L on an F-150, ProCharger produces more power than an SVT Lightning, and is featured as part of Project Sportsman on Spike TV.

2003 - 04



Having outgrown their existing facility, ProCharger breaks ground on a major building expansion.



The Little Red Wagon project, appearing on Stacey David's "Trucks!" TV show, produces 55-60% power gains on a ProCharged Dodge Ram with a 5.9L Magnum.



Intercooled ProCharger systems for the 2004+ F-150 are released, delivering a ground-pounding 65% more power.

“ProCharger’s been doing this for a long time and they’ve got it dialed in.” – “Gearz TV”, Stacey David

2 0 0 5 - 0 6

ProCharger is first to market with an intercooled supercharger system for 2004+ Dodge HEMI 5.7L Ram trucks, applying its industry leading HEMI supercharging knowledge.



Continuing its history of the largest, most reliable power for LS motors, Intercooled ProCharger Systems debut for 2003-06 GM trucks, featuring the coolest charge air temperatures and 60-65% power gains.



Discovery Channel’s “Monster Garage” makes a powerful statement with a ProCharger, adding insane power to an Army Jeep hot rod puller.



2 0 0 7 - 0 8



After being outlawed for years, a ProCharged racer wins the first centrifugal championship in NHRA. ProChargers are now producing more than 2,500 hp with gasoline and 3,000 hp using methanol.

A ProCharger-powered Chevrolet racer wins the prestigious HOT ROD Drag Week, earning the title: Fastest Street Car in America.



With the introduction of helical gearsets for noise reduction, ProCharger becomes the first company to offer a choice of supercharger sound levels.



Performance Product of the Year

The Performance Product of the Year title is awarded to ProCharger for its Harley-Davidson® intercooled supercharger systems.

2 0 0 9 - 1 1

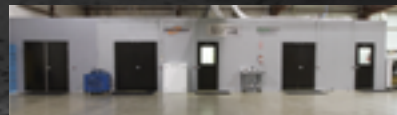
To accommodate continued growth, ProCharger expands into an adjacent facility.



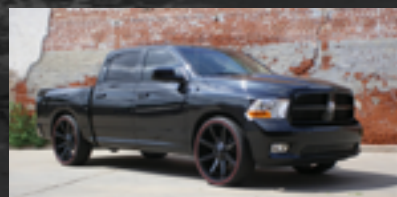
ProCharger is first to market with a supercharger system for the Ford Raptor, and Truckin’ magazine documents a 200+ crankshaft HP increase on a stock 6.2L Raptor, while also praising the quick and clean installation.



A state-of-the-art aerodynamic test lab is constructed within the ProCharger campus.



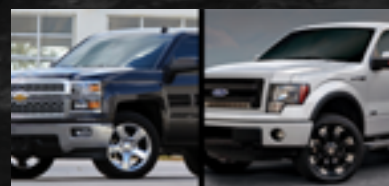
2009-10 Ram ProCharger Intercooled Systems are introduced, producing industry leading power.



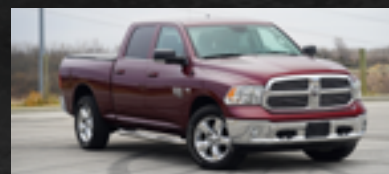
2 0 1 2 - 1 8



ProCharger Systems for 2012+ SRT and 2011+ 5.7L Jeep Grand Cherokee start shipping. Testing demonstrates supercar performance, with 0-60 mph in 3.6 sec.



New Intercooled Systems for 2014+ 5.0L 4V F-150's and 2014+ GM Trucks and SUV's produce outstanding power gains and durability, with easy installation.

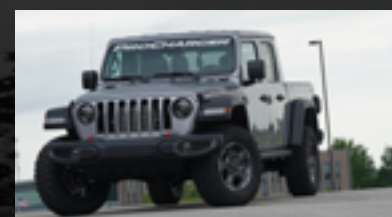


ProCharger releases a rugged new Intercooled System for the 2011+ Dodge RAM Classic.



ProCharger offers the largest power gains from any supercharger system for Toyota owners.

2 0 1 9 - 2 5



With industry leading power gains, ProCharger introduces a supercharger systems for both the Wrangler JL and the Gladiator.



ProCharger is first to offer an intercooled system for newly designed GM trucks.



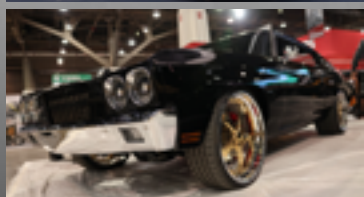
ProCharger is first once again with supercharged power, this time for the redesigned Ram



2024-25 F-150 owners are able to enjoy up to an 80% increase in reliable power, the same as 2021-23 owners.

FOR WHATEVER MOVES YOU

STREET, STRIP, SAND & WATER... WE'VE GOT YOU COVERED



ProCharger is The **ULTIMATE Power Adder**®

As a serious truck & SUV owner, you are all about towing, hauling, performance and every-day reliability. So why settle for anything less from the vehicles in your garage? From four-door family sedans, to boats, sport cars, Harley-Davidson motorcycles, high-performance UTV's and all-out race and track cars, chances are ProCharger has

an intercooled supercharger solution for it. For your truck or SUV, ProCharger has the largest offering of supercharger kits as well as kits for engine swaps. Give our sales team a call at (913) 338-2886 or visit ProCharger.com for more information.

"The real magic, of course, comes from the ProCharger centrifugal supercharger. Which specific blower model used depends on how fast you want to go." – HOT ROD Magazine



PROCHARGE YOUR LIFE

GET EQUIPPED, GET CONNECTED

ProCharger Online: Catalogs, Vehicle Gallery, Apparel, Parts and more!

Check out our website for more application-specific information about our complete line of supercharger systems. You'll find cool videos, installation manuals, and a vehicle gallery where you can add your own build! It also offers online, downloadable versions of our product catalogs. Show your ProCharger pride by purchasing from our large selection of ProCharger apparel and merchandise, including T-shirts, hats, license plate frames, and more. Stock up or upgrade ProCharger-related parts, like gauges, oil, and blow-off valves. Visit ProCharger.com.



**SCAN HERE TO SHOP THE
PROCHARGER STORE NOW!**





PROCHARGER[®]

SUPERCHARGER SYSTEMS

STREET OR STRIP - PROCHARGER HAS YOU COVERED WITH **THE ULTIMATE POWER ADDER[®]**

All of us at ATI encourage you to use your newfound ProCharger power responsibly.

Please drive safely and be respectful of your fellow motorists. If you feel the need to race, don't do it on the street—take it to the track!

ProCharger[®] and The Ultimate Power Adder[®] are registered trademarks of Accessible Technologies, Inc. Chevy[®]/GM[®] are registered trademarks of General Motors and are used for descriptive purposes only; Ford[®] is a registered trademark of Ford Motors and is used for descriptive purposes only; Chrysler[®]/Dodge[®]/Ram[®]/Hemi[®]/Jeep[®] are registered trademarks of FCA, LLC and are used for descriptive purposes only. Toyota[®] is registered trademarks of Toyota Industries and are used for descriptive purposes only.

© Copyright 2025, Accessible Technologies, Inc. 9/25

FOLLOW US



#PROCHARGER

CALL OR EMAIL

Sales/Service Phone Hours: 8:00 am–5:30 pm CST (M-F)
Sales Email: sales@procharger.com
Technical Service Email: ts@procharger.com
Customer Service Email: cs@procharger.com



14801 W. 114TH TERR LENEKA, KS 66215 • PH: (913) 338-2886 • FAX: (913) 338-2879

WWW.PROCHARGER.COM

